

The GUIDE to DOWNTOWN Missoula



- Dining
- Shopping
- Entertainment
- Arts & Culture
- Community Events
- Riverfront Access
- Caras Park
- Zero Fare Bus Service
- Walking Tours
- Parking Information
- ...and more!

missouladowntown.com



Welcome to Missoula!

Downtown Missoula is one of the most vibrant, lively, healthy, and engaging city centers in the Rocky Mountain West. It's the place to connect with friends and family to enjoy the richness of community. It is the epicenter of commerce, culture, dining, and entertainment. Downtown Missoula offers the local flavors of a thriving community wealthy in art, culture, and outdoor recreation.

Downtown is an important asset to our quality of life in Missoula. It is a symbol of:

- A Healthy Economy
- Excellent Quality of Life
- Our Community's History & Identity
- Local Pride
- Quality of Business & Employment Life

Downtown Missoula is the heart of community, government, business, arts and culture, shopping, dining and entertainment for all. A thriving Downtown is important to the entire community of Missoula because:

- Downtown business keeps money in the local economy
- Downtown's health impacts surrounding residential neighborhoods
- Downtown is a good incubator for new small businesses
- Local independent businesses support local community projects
- Downtown businesses employ more than 14,000 Missoulians
- Downtown brings people together and builds a stronger community



Downtown Missoula is a major destination

and economic driver due to the leadership and work of the Downtown Missoula Partnership, which is comprised of:

- Missoula Downtown Association (MDA)
- Downtown Business Improvement District (BID)
- Missoula Downtown Foundation (MDF)

The Missoula Downtown Association

is comprised of its members: proud and dedicated people who work together to fulfill the mission to promote, support and enhance the vitality of Downtown Missoula for the betterment of the community.

For more than 45 years, the MDA has played a significant role in fostering the health of Downtown by:

- Encouraging historical preservation and enhancement of Downtown's physical beauty
- Creating a unique ambiance by supporting the development of riverfront trails and parks
- Creating and maintaining street improvement and place-making projects
- Serving as the primary advocate for Downtown and maintaining quality relationships and open communications with local municipalities and community organizations
- Maintaining and programming Missoula's Town Square—Caras Park—with more than 100 annual events
- Planning and producing more than 30 community events each year that draw nearly half a million visitors to the heart of Downtown

About the MDA

The MDA is an award-winning, local non-profit organization, supported by the community as a whole through membership, events, and volunteerism.

Major MDA events produced annually include:

- **Winter Brewfest:** late February
- **Garden City Brewfest:** first Saturday in May
- **Out to Lunch Summer Series:** Wednesdays in June, July and August
- **Downtown ToNight Summer Series:** Thursdays in June, July and August
- **River City Roots Festival – Missoula’s Signature Celebration:** last weekend in August
- **Parade of Lights and Lighting of the Tree:** first Saturday in December

In addition to events, the MDA spends significant resources on advocacy, implementation of the Downtown Master Plan, membership recruitment and retention, and membership services such as Downtown Gift Cards, business guides, calendars, planning tools and more.

To learn more about the work of the Missoula Downtown Association and its partners, go to missouladowntown.com or visit us in person at 218 East Main Street.

Thank you for choosing Downtown Missoula as your destination to dine, shop, stay, play, work, recreate and connect to this vibrant community.



Contents

About the MDA Advocates for a vibrant Downtown Missoula	4
Dine Breweries, pubs, restaurants, & more!	6-15
Shop Downtown shopping—as unique as you!	16-23
Stay Enjoy abundant accommodations	24-27
Play Galleries, museums, river access, events & more!	28-33
Businesses & Services Community-minded business to serve you	34-47
Tours / Historic Districts Public art, historic buildings, Missoula treasures	48-57
Parking Information Parking structures and on-street parking information	58-59
Missoula Map City-wide map of Missoula	60-61

MISSOULA
Downtown
CONNECTING OUR
COMMUNITY

missouladowntown.com

© 2022 Missoula Downtown Association
218 East Main Street, Missoula, MT 59802 (406) 543-4238
Cover image by Cass Krughoff
Contributing Photographers: Athena Photography, Art & Image

Dine

Downtown Missoula is the very best destination in Montana for a wide variety of food and beverage options. Many MDA members have been nationally recognized for their incredible offerings.

Pubs & Bars

The Badlander, Locals Only, Golden Rose & 3-in the Side

208 Ryman (406) 529-9377
thebadlander.com

Multiple bars, offering a wide variety of food, adult beverages, dancing and gaming. All under one roof in the Historic Palace Building.

Bar Plata

107 N. Higgins (406) 456-7156
barplatamissoula.com

Spanish inspired cocktail bar featuring snacks and a high energy atmosphere.

Cambie Taphouse

945 Wyoming, Ste. 145
(406) 317-1268 cambiesawmill.com

Cambie Taphouse + Coffee Old Sawmill District features an ever-changing selection of 66 tap beverages and a great selection of bottles and cans. Paired with a simple food menu, we are a gathering place for all to enjoy.

CREATE art bar

140 E. Front (406) 830-3941
Createartbar.com

CREATE art bar is a do-it-yourself crafting bar where people can be creative, make a unique piece of art and enjoy craft cocktails, wine & beer.

James Bar / Al's & Vic's

119 W. Alder (406) 728-4804
jamesbarmontana.com

An unusual connection between Missoula's oldest and Missoula's hippest pubs. Old-style drinks and pool at A&Vs. Modern menu, cocktails, and outdoor seating at the James Bar.

Red's Bar

217 Ryman (406) 728-9881

Downtown Missoula's go-to sports bar with multiple screens, games, and a great jukebox. Open daily.

The Rhinoceros

158 Ryman (406) 721-6061

More than 50 beers on tap, plus countless more in the bottle. Go around the world in 50 beers or play pool. Summer alley patio.

Stockman's Bar

125 W. Front (406) 240-5596

No-frills watering hole for shots and beers, with DJs and poker on most nights, and periodic beer pong.

VFW Post 209

245 W. Main (406) 728-7749
vfwpost209.org

VFW is a 501 (c3) and 501 (c19) Veterans organization that exists to help veterans and their families with VA benefits, awards, and general welfare. The bar is open to the public with great bartenders and fun crowd!

Casual Dining

Basal

114 N. Higgins (406) 249-3326
basalhospitality.com

Located in the historic Missoula Mercantile Pharmacy downtown, Basal offers delicious food and beverages, specializing in unique salads, coffee, sipping broth, and convenient grab and go options.

Biga Pizza

241 W. Main (406) 728-2579
bigapizza.com

Modern Downtown dining with traditional and special brick oven pizza, calzones, salads, sandwiches, specials and desserts, using a time-honored Italian method for dough making.

Bridge Pizza

600 S. Higgins (406) 542-0002
Bridgepizza.com

Local, family-owned and operated business that prides itself on great food and friendly service.

Burns Street Bistro

1500 Burns (406) 540-2627
burnstbistro.com

An eclectic dining experience nestled between trailers and train. New menu items each week.

Dobi's Teriyaki

123 W. Front (406) 926-1661
dobisteriyaki.com

A fast-casual teriyaki shop that brings "Seattle style" teriyaki to the Big Sky state. Located in the heart of downtown Missoula, Dobi's is the one and only place to go for all your yaki cravings.

CREATE | art bar

cocktails + crafts



CRAFT COCKTAILS • ART WORKSHOP
WINE • CRAFTS • BEER • DIY STUDIO

140 E. Front Street Missoula, MT 59802
in the Residence Inn - Mercantile

CREATEARTBAR.COM

@CREATEARTBAR

Doc's Sandwich Shop

214 N. Higgins (406) 542-7414

docsgourmet.com

Great hot and cold sandwiches, homemade soups, salads, beverages and desserts. Famous for Hangover Stew. Dine-in, delivery, catering. Open weekdays.

El Cazador

2209 South Ave W. (406) 728-3657

elcazadormissoula.com

Authentic Mexican cuisine prepared by the Hernandez family. Beef, chicken, seafood, beer, wine and the best margaritas around. Food truck and catering available. Open daily.

The Empanada Joint

123 E. Main (406) 926-2038

empanada.us

Fun place serving empanada's—vegetarian and meat pockets, folded in a buttery crispy dough. Also serving soups, seasonal entrees, & desserts.

Five on Black

325 N. Higgins (406) 926-1860

fiveonblack.com

Brazilian cuisine with buffet-style large and small bowls filled with delicious meats, vegetables, sauces and toppings for a great price.

Golden Yolk Griddle

200 W. Pine (406) 480-6355

goldenyolkgriddle.com

Offering consciously sourced breakfast throughout the week to the good people of Missoula in their corner shop location.

Good Food Store

1600 S. 3rd St. W. (406) 541-3663

goodfoodstore.com

Award-winning salad bar, soup bar, and hot bar, fresh baked pizza from a Fire Deck, and build-your-own rice & noodle wok bowls. Enjoy custom espresso drinks, along with an array of fresh juices, smoothies, and kombucha.

Iron Horse Brew Pub

501 N. Higgins (406) 728-8866

ironhorsebrewpub.com

Great drinks, great food, great people, great atmosphere, and Missoula's best outdoor dining. Where you'll always find someone you know. Open daily.

Jimmy John's

420 N. Higgins (406) 542-1100

jimmyjohns.com

Franchise sandwich shop specializing in delivery. Sandwiches made fresh. Dine-in and catering available.

Mary's Mountain Cookies

101 S. Higgins (406) 926-2992

marysmountaincookies.com

Serving freshly baked treats, including edible cookie dough, scrumptious quarter-pound cookies and brownies, or create your own ice cream-filled cookies since 1986.

Masala

206 W. Main (406) 926-6444

masalamt.com

Missoula's Eastern Indian restaurant with a brand-new brick & mortar location at Main & Ryman. Featuring vegetarian and gluten-free items.

The Notorious P.I.G. BBQ

247 W. Front (406) 493-8028

thenotoriouspigbbq.com

Missoula's locally-owned, award-winning barbecue with fresh-smoked meats prepared daily.

Old Post Pub

103 W. Spruce (406) 540-4433

oldpostmissoula.com

Local pub serving brunch, burgers, cocktails and more. Live music and great late-night menu.

Pangea/Stave & Hoop

223 N. Higgins (406) 493-1190
mtpangea.com/staveandhoop.com

Pangea is a casual eatery with a globally inspired menu featuring tacos, curries, flatbreads & burgers, plus weekend brunch. Stave and Hoop is a new Missoula speakeasy serving cocktails, beer, wine, and Montana style comfort food.

Sa Wad Dee

221 W. Broadway (406) 543-9966
sawaddeedowntown.com

Outstanding spicy Thai food served buffet style for lunch.

Tamarack Brewing Company

231 W. Front (406) 830-3113
tamarackbrewing.com

Handcrafted ales and fantastic pub fare in a family-friendly environment. Two stories, two outdoor patios riverside, large screen televisions in the lower level.

Tagliare Delicatessen

1433 S. Higgins (406) 830-3049
tagliaredelicatessen.com

Italian deli offering sandwiches, market goods, cheeses & meats, and wine. Fresh local and imported Italian ingredients.

Thomas Meagher Bar

130 W. Pine (406) 540-4402
thomasmeagherbar.com

Irish pub and sports bar in a newly-remodeled historic building. Full-service bar with dynamic pub menu featuring multiple versions of mac and cheese.

Wally & Buck

319 E. Front (406) 370-8264
wally&buck.com

Gourmet burgers with locally sourced ingredients.



Worden's Market & Deli

451 N. Higgins (406) 549-1293
wordens.com

Local market featuring an extensive beer, wine, specialty food and grocery selection. Full service deli, take home meals, catering and more! Walk-In Humidor as well. Find what you need at Worden's!

Fine Dining

1889 Steak – Seafood - Spirits

104 N. Higgins (406) 529-1263
1889Missoula.com

A traditional steakhouse offering classic cuisine with subtle modern touches. Our menu includes a variety of prime grade steaks, fresh seafood, and unique entrees featuring local ingredients.

Brasserie Porte Rouge

231 E. Front (406) 541-0231
brasserieporterouge.com

Hearty French cuisine focused on simplicity and superb execution, with a varied wine list, 12 taps, and an oyster bar.

Ciao Mambo

541 S. Higgins (406) 543-0377
ciaomambo.com

Traditional Italian cuisine with a fun family atmosphere, wonderful service, friendly attitudes and a great wine menu. Frank Sinatra would love this place!



**Missoula's First and Oldest Grocery
Since 1883!**

451 N. Higgins Avenue

**The Best in Beer, Wine, Deli,
Groceries, and So Much More!**



**Thanks
for
Comin'
on
Over!!**

-Mark

The Camino

125 N. Pattee (406) 249-5361
thecaminomissoula.com

The Camino makes everything in house, focusing on masa production. From tacos al pastor to cochinita pibil to fresh ceviche, it's all best washed down with a cold Pacifico, a hibiscus margarita, or small batch mezcal.

The Depot

201 W. Railroad (406) 728-7007
depotmissoula.com

Downtown Missoula's oldest dinner destination since 1974. Offering beef and fresh seafood, homemade desserts, and casual dining on the summer deck.

Iron Griz

515 South Ave E. (406) 728-5106
irongriz.com

Serving appetizing dining experiences focused on providing seasonal menus, designed around foods grown from the garden. Farm-to-table restaurant nestled against Mount Sentinel

Michi Ramen Bar

137 W. Front (406) 926-1186
michimissoula.com

A collaboration between chef Drake Doepke and the creatives of Missoula Valley, Michi is where local community meets urban styling and contemporary Japanese dining.

Plonk

322 N. Higgins (406) 926-1791
plonkwine.com

Mingling excellent food, wine, and music together in a stunning venue with a beautiful atmosphere, inside and outside. Historic building with beautiful art.

SakeTome Sushi

137 W. Front (406) 926-2555
saketomesushi.com

A collaboration between chef Drake Doepke and the creatives of Missoula Valley. Enjoy fish, sushi rolls, appetizers, and cocktails in a comfortable and artistic atmosphere.

Second Set Bistro

111 N. Higgins (406) 830-3233
secondsetbistro.com

Second Set is a place to celebrate love of food, wine, music, and community. Gather with friends and family for a memorable dinner driven by the hospitality and passion of our staff.

Scotty's Table

131 S. Higgins, Parkside
(406) 549-2790 scottystable.net

American Bistro Fare designed to transport your senses and awaken your palate. Unique wine and beer.

Sushi Hana

403 N. Higgins
(406) 549-7979 sushimissoula.com

The first best sushi bar in the last best place.

Zoo Thai

150 E. Front (406) 540-4206
Zoothai.com

Authentic Thai food located in the Mercantile downtown.

Breweries & Wineries

Bayern Brewing

1507 Montana (406) 721-1482
bayernbrewery.com

Montana's first microbrewery started by German Brewmaster Juergen Knoeller more than 25 years ago. Award-winning lagers and seasonals.

Big Sky Brewing Company

5417 Trumpeter Way (406) 549-2777
bigskybrew.com

Montana's largest microbrewery and one of the oldest featuring 15 different locally-made brews, including the infamous Moose Drool Brown Ale.

Conflux Brewing Company

210 N. Pattee (406) 926-3589
confluxbrewing.com

Local, family-friendly brewery and restaurant with focus on high-quality Montana ingredients. Enjoy the atmosphere of the two-story building, outdoor patios, and outdoor fire pit.

Cranky Sam Public House

233 W. Main (406) 540-4325

Cranky Sam Public House is beer and wine bar with a next-door brewery all in one downtown Missoula location. We offer fresh beer from Cranky Sam Brewing as well as a broad selection of beer, sours, cider, hard seltzer and wines from all over the world.

Dram Shop

229 E. Front and 2700 Paxson
(406) 540-4303 dramshopmt.com

Montana's first growler fill station, with over 30 taps of beer, wine, soda and cider inside the Historic Mercantile warehouse.

Draught Works Brewery

915 Toole Ave. (406) 541-1592
draughtworksbrewery.com

World-class, hand-crafted beers in the heart of the Westside Neighborhood since 2011.

GILD Brewing

515 S. Higgins (406) 926-3258
gildbrewing.com

Local brewpub with a basement arcade located on Missoula's coolest block. Open every day for drinks, serving dinner Wednesday-Saturday and brunch on Sundays.

Great Burn Brewing Co.

2230 McDonald Ave. (406) 317-1557
greatburnbrewing.com

Microbrewery and taproom on the south side of Missoula, featuring hand crafted ales on a small batch system, hop-centric and West Coast style beers, and 10 tap handles including six seasonal beers.

KettleHouse Brewing Company

602 Myrtle, and Bonner
(406) 728-1660 kettlehouse.com

Locally-owned with two Downtown taprooms and a production facility on the Clark Fork River in Bonner. A Montana focus and famous for Cold Smoke.

Distilleries

Montgomery Distillery

129 W. Front (406) 480-6355
montgomerydistillery.com

Missoula's first craft distillery offering a range of spirits made from the bounty of Western Montana's farms, fields, and mountains.

Coffee Bistros & Cafes

Bernice's Bakery

190 S. 3rd St. W. (406) 728-1358
bernicebakerymt.com

Missoula's Best Bakery 15 years running. Cozy atmosphere, local stout coffee, made-from-scratch pastries, breads, desserts and lunch. Open daily 6 am-8 pm.

Black Coffee Roasting Co.

525 E. Spruce, The Wren Hotel -
201 E. Main (406) 541-3700
blackcoffeeroastingco.com

Downtown Missoula's coffee roaster with a focus on small batches and cup quality since 2010.

Butterfly Herbs

232 N. Higgins (406) 728-8780
www.butterflyherbs.com

The essence of Missoula with Espresso Bar in the back and light lunches for all.

City Brew Coffee

400 W. Broadway (406) 721-3600
citybrew.com

Coffee without compromise. A Montana-based custom roaster with a comfortable atmosphere. Featuring fresh-baked pastries and an excellent line of teas.

Clyde Coffee

610 S. Higgins (406) 540-4481
clydecoffee.com

Downtown's newest and one of few on the Hip Strip. Fast Wi-Fi, plenty of seating, open daily at 6 am.

Dog and Bicycle Bakery Café

875 Wyoming, Ste. 102
(406) 829-9663 dogandbicycle.com

A touch of Alice in Wonderland meets industrial steampunk. Breakfast, lunch, and coffee.

Drum Coffee

1000 E. Broadway, 600 South Ave. W.
(406) 361-0111 drumcoffeemt.com

The roaster location on East Broadway, the original location at South Ave W, and now a third location inside the Florence Building at 111 North Higgins. All locations offer house baked goods, light foods, and the best coffee in town.

Ducrey Chocolate Maker

311 E. Front (406) 880-1388
ducreychocolate.com

Serving breakfast and brunch with daily specials. Tea, espresso, lattes, chocolate!

Green Source Missoula

617 S. Higgins, 255 S. Russell,
inside VRTX (406) 239-5272
greensourcemissoula.com

Organic juice bar and café on the Hip Strip, featuring locally-sourced and other live foods.

Hunter Bay

812 Toole (406) 830-3388
Hunterbay.com

Serving locally-roasted coffee, plus tea, smoothies, breakfast and lunch.

Lake Missoula Tea Company

136 E. Broadway (406) 529-9477
lakemissoulatea.com

Missoula's exclusive tea bar in the Historic Masonic Temple. The best loose-leaf tea from around the world, plus wholesale and holiday gifts.

Liquid Planet

121 W. Broadway (406) 552-4447
liquidplanet.com

A little "city" with big Missoula flair! An extensive beverage menu, plus sandwiches and pastries.

Market on Front

201 E. Front (406) 541-0246
marketonfront.com

Market on Front offers a variety of chef-inspired prepared foods, sandwiches, salads and soups, in which a majority of the ingredients are natural or organic and as many as possible are locally grown.

Pearl Boba Tea

420 N. Higgins, Ste. B
(406) 240-2731

Boba Tea or "bubble" tea is sweet, flavorful and fun. Boba is a perfect treat to enjoy while hiking the "M", floating the Clark Fork, or hanging out on campus.

Veera Donuts

617 S. Higgins #2 (406) 317-1109

VEERA is a local woman-owned restaurant on the Hip Strip specializing in small-batch and scratch-made donuts. VEERA has become more than just a donut shop since first opening its doors, now offering breakfast burritos, breakfast sandwiches, and many gluten-free options.

Trapper Peak Coffee Company

Inside Missoula Public Library
455 E. Main (406) 549-7765
trapperpeakcoffee.com

Delicious fair-trade, organic coffee and hand-crafted sandwiches M-F. Enjoy lots of reading, free Wi-Fi and easy parking.

Ice Cream

Big Dipper

631 S. Higgins, 2700 Paxon, Ste. F
(406) 543-5722
bigdippericecream.com

Missoula's locally-made and favorite ice cream and sorbet. Recognized on Good Morning America, and voted "Missoula's Best" by *Missoula Independent* readers. Open daily.

Sweet Peaks Ice Cream

223 W. Front (406) 549-0028
sweetpeaksicecream.com

Montana-made ice cream and sorbet in classic, unique, and creative flavors, using local milk, cream, fruit, and more.

Caterers / Food Trucks / Vendors

AB Cooks—A Personal Chef Service

P.O. Box 7411 (406) 880-9695
missoulapersonalchef.net

An in-home cooking service that provides groceries and equipment to prepare up to five dinners in your home. Customized to your tastes, packaged in convenient portions, then frozen to be enjoyed at your convenience.

Big Dipper Mobile Ice Cream

Cone Boy Truck (406) 543-5722
bigdippericecream.com

Missoula's favorite ice cream and sorbet location in a mobile food truck so you never miss a chance to enjoy "Missoula's Best" ice cream.

Big Thai Country

(406) 240-9511 jumesthaicuisine.com

Missoula's first authentic Thai Food Truck, offering a variety of Thai food. Featuring Weekly specials and working events.

Bravo Catering

224 N. Higgins (406) 541-4900
Bravocatering.net

Will cater anything in and around town.

Clove Cart Pizza Peddlers

(406) 274-4602 clovecart.com

A pedal-powered pizza cart with extraordinary and nourishing thin-crust pizza baked in a garlic-shaped brick oven.

Dreamy's Soft Serve

Dreamyssoftserve.com

Dreamy's Soft Serve crates the creamiest soft serve in a funky 1976 GMC Vandura Food Truck.

El Cazador

2209 South Ave W. (406) 728-3657
elcazadormissoula.com

Authentic Mexican cuisine prepared by the Hernandez family. Food truck and catering available.

Isla's Lemonade

(406) 880-3094

Fresh-squeezed and homemade lemonade. Featured at Out to Lunch and Downtown ToNight.

Kornutopia

617 S. Higgins, Ste. C
(406) 926-1480 kornutopia.com

Once you start eating this sweet and flavorful ready to eat Kettle Corn, you won't be able to stop. A favorite at local markets and events offering a variety of products to choose from.

Lil' Orbits Doughnuts

(406) 546-5707

The freshest, tastiest mini donuts served hot at local area events. Available wholesale at Missoula coffee shops and convenience stores.

Mountain Berry Bowls

(406) 407-1368

mountainberrybowls.com

A funky food truck serving all natural, gluten free, and dairy free smoothie bowls. Book them for parties, or find them on North Higgins or in Caras park to try one today.

M-80 Chicken

M80chicken.com

Missoula's favorite Nashville-style fried hot chicken sandwich food truck located in the parking lot of Kettlehouse brewhouse on Myrtle St.

Pattie Wagon

(406) 544-7660

Mobile food truck serving up affordable and hot burgers, pulled pork, fish & chips, and desserts at community events.

River City Eats

(406) 250-4594

rivercityeat@gmail.com

A mobile food facility catering savory sliders, fries, and fresh salads from regionally sourced ingredients to local community events.

Thirst Tea Bubble Tea

(406) 531-5741 thirstteaboba.com

Mobile beverage truck serving a delicious selection of signature bubble teas and mochi.

Thyme Out Café

(406) 214-2424

thymeoutmanagementllc.net

Healthy pre-cooked meals prepared in the café behind Bicycle Hangar.



Shop

Downtown Missoula offers some of the best shopping in the Pacific Northwest with nearly 200 locally-owned destinations offering almost everything one could want, coupled with a welcoming and friendly Montana vibe.

Apparel & Shoes

Betty Venom Vintage

104 E. Main (406) 560-7432

A wide array of curated vintage clothing, décor, and furniture. Specializing in clothing and decor from the 1980s and earlier.

Betty's Divine

509 S. Higgins (406) 721-4777

bettysdivine.com

Fresh, contemporary, creative, and affordable clothing, footwear, and accessories in a unique atmosphere, plus Divine Trash vintage in the back.

Cloth & Crown

329 N. Higgins (406) 542-2626

clothandcrown.com

A carefully curated collection of women's clothing, handbags, scarves, candles, gorgeous lingerie, and jewelry in a variety of lines and prices.

CLOVER

114 E. Main (406) 542-2213

A clothing and accessories boutique well known for its well thought selection of innovative and established Made in the USA brands that are casual, classic and comfortable.

Ellee Belle

(406) 799-8565 elleebelle.co

facebook.com/groups/elleebelle

Beautiful, affordable looks with a little French flair, Ellee Belle Collective is a fun space for girls to do some shopping from the comfort of their home and feel good about themselves!

The General Public

112 W. Front (406) 493-0132

A lifestyle shop that curates small brands that focus on sustainable fashion and ethical design.

Hide & Sole

236 N. Higgins (406) 549-0666

hideandsole.com

Leather shoes and goods including belts, purses, wallets, briefcases, backpacks, and sheepskin footwear. Birkenstock, Dansko, Haflinger, Naot, and Blundstone brands.

La Bella Vita

135 N. Higgins (406) 721-2955

labellavita.com

Newly revised retail experience, offering more in personal clothing and jewelry, just across the street from its former location.

CLOVER

lifestyle + design

Featured Brands

Frank & Eileen - Velvet - AMO- James Perse - Chan Luu
7 For All Mankind - White & Warren - Not Monday

114 East Main Street 406-542-2213 cloverlifestyle.shop
Interior Design - shannoncallaghan.com

The M Store

300 N. Higgins (406) 926-1249
Griz Nation Destination, featuring UM and Griz apparel and merchandise for all ages and sizes highlighting Nike gear and more. Open daily.

The Montana Scene

170 E. Front (406) 493-1588
themontanascene.com
With a mission to create fashionable and unique products that showcase a passion and admiration for Montana and it's adventurous atmosphere, The Montana Scene carries clothing, home decor, and gift items.

Mood Boutique

208 N. Higgins (406) 549-4000
moodboutiquemt.com
With devotion to quality and affordability, Mood offers unique and understated fashion from traditional to chic, novel to must-have brands.

My Montana Roots

225 N. Higgins (406) 926-3424
mymontanaroots.com
Clothing you can be proud of, if you're from or you like Montana. With a full apparel and accessories line for men, women and children and a robust online sales site, watch for Wear your Roots apparel in your state soon.

Olive + Iron

108 N. Higgins (406) 541-4766
oliveiron.com
A go-to destination for all men's and women's clothing needs. If you embrace tradition, create your own trends, or follow your own heart, we have what you are looking for in a wide range of prices.

One Eleven

111 N. Higgins (406) 541-7376
oneelevenboutiquemissoula.com
Fun, funky jewelry; unique and eclectic accessories and gifts. Featured in *Elle Magazine's* "where to shop" guide.



olive + iron
Men's and Women's Fashion & Accessories

SHOP 7 DAYS A WEEK
M-F 10-6
Sat 10-5
Sun 11-4



@oliveandiron

108 N Higgins Missoula, MT 59802 (406) 541-4766

PaddleHeads Post

140 N. Higgins (406) 543-3300
paddleheadspost.com

All things Montana! Montana Gifts & Souvenirs. Griz Merch. PaddleHeads Gear & Tickets. Missoula Visitor Information Center!

Pink Elephant

301 N. Higgins (406) 214-0247

Looking for sustainability AND style? In fashion AND home décor? We curate an array of upcycled and quality goods from our town's diverse community.

REcreate Designs

P.O. Box 1314 (406) 214-9078
recreatedesigns.com

Specialty recycled and handmade clothing, repurposed items to create skirts, headbands, journals, tote bags, jewelry, maps, scraps and more. Wholesale and Markets.

Runner's Edge

304 N. Higgins (406) 728-9297
runnersedgmt.com

Missoula's nationally recognized running specialty store for racers, joggers, walkers and more, ensuring the right shoes for all. Great selection and knowledgeable staff.

Sunday School

610 S. Higgins (406) 529-9117
shopsundayschool.com

Located in the heart of Missoula's Hip Strip, Sunday School is a shoe and apparel boutique featuring specialty clothing and sneakers from some of today's funnest new designers and brands.

Stitches Embroidery & Screen Printing

939 Stephens (406) 549-2632
stitchesmontana.com

We are your one stop shop for all of your promotional and apparel needs. We offer fast and friendly service and strive to make you look good!

Art

4 Ravens Gallery

248 N. Higgins (406) 317-1543
4ravensgallery.com

An artist-run gallery specializing in fine contemporary craft, featuring local and regional artists exploring glass, stone, metal, wood, jewelry, fiber, photography and clay.

A. Banks Gallery

131 E. Main (406) 728-9348
abanksgallery.com

Located in the heart of Montana, A. Banks Gallery represents over three dozen regionally and nationally acclaimed western artists.

MONTANA GIFTS & SOUVENIRS + GRIZ MERCH PADDLEHEADS GEAR & TICKETS



140 N Higgins Ave Missoula, Montana
406.543.3300 or Paddleheadspost.com

Art Attic Framing & Design

123 South Ave. W. (406) 728-5500
artatticmt.com

A well-established custom framing gallery locally owned and operated since 1968, offering conservation framing, art and frame restoration, professional installation, and commercial and residential framing.

Artists' Shop

127 N. Higgins (406) 543-6393
Missoulaartistsshop.com

Missoula's premiere artist owned cooperative gallery, featuring local and regional fine craft and art: ceramics, jewelry, wood, glass, calligraphy, painting, prints, cards, local shirts, photography, textiles and more.

Dana Gallery

246 N. Higgins (406) 721-3154
montana.com/danagallery

Featuring original paintings, photographs, sculptures, and textiles, plus photographic workshops and tours.

Frame of Mind

1706 Brooks St. (406) 549-8589
frameofmindmt.com

Full-service framing shop and gallery featuring the work of Monte Dolack & MaryBeth Percival. Open Tue.-Sat. and Mon. by appointment.

Radius Gallery

120 N. Higgins (406) 541-7070
radiusgallery.com

Showcasing contemporary fine art by regional artists.

Relic Gallery

124 N. Higgins (406) 317-1151

Offering unique and often edgy collectibles sourced exclusively by Timothy Gordon Appraisals to create consistency, accountability, and validity in our merchandise & pricing.

Scott Woodall Artist

(406) 396-9609 scottwoodallartist.com

Offering commissioned pieces, freelance work, graphic design, and illustration services.

Zara Gallery

248 N. Higgins (406) 546-4576
zara-gallery.business.site

Montana Sapphire Jewelry and Antiques

Books/Music

Ear Candy Music

624 S. Higgins (406) 542-5029
earcandymusic.biz

We offer a huge, diverse selection of high-quality music, and exceptional customer service, small town-style, with your satisfaction our highest priority.

Fact & Fiction

220 N. Higgins (406) 721-2881
factandfictionbooks.com

Featuring experienced booksellers with an eclectic knowledge of titles and authors and fabulous literary events year-round.

The ARTISTS' SHOP



local art & fine craft

127 N. Higgins • www.MissoulaArtistsShop.com • 543-6393

Shakespeare & Company

103 S. 3rd. St. W. (406) 549-9010
shakespeareandco.com

A feast for the book lover with a staggering selection of new and used books from around the world.

Slant Street Records

1413 S. Higgins (406)317-1825
slantstreetrecords.com

Lovingly curated specialty record shop constantly sourcing classic, rare, and hard-to-find Vinyl LPs & 45s.

Children & Babies

Hazel and Fawn

612 S. Higgins (406) 317-1074
hazelandfawn.com

Providing families with babies the best baby products and equipment for all of life's family adventures, including hiking, biking and more.

Imagination Station

227 N. Higgins (406) 926-3325

Missoula's premiere toy store, offering classic toys and games, blocks, science kits, erector sets, tea sets, puppets, arts and crafts, puzzles, and more.

Floral

Bitterroot Flower Shop

811 S. Higgins (406) 542-0309
bitterrootflowershop.com

Full-service flower shop featuring a wide array of fresh flowers, plants, silks and gifts with full-time wedding consultant on staff.

Caras Nursery

2727 S. 3rd St. W. (406) 549-3242
carasnursery.com

Western Montana's destination for gardeners!

Leaf + Quiet

235 N. 1st St. W. Ste. F
(406) 218-6080

Carrying a wide range of houseplants, as well as planters, plant hangers, books, and other plant-related goods.

Pink Grizzly

1400 Wyoming (406) 728-3370
montanawreaths.com

Offering quality products and family-style service including affordable plants, flowers, Christmas trees, and wreaths.

Food & Beverage

Back to the Mother

Microbrewed Kombucha

12120 Hwy. 10 E (406) 616-3623
backtothemother.earth

Missoula's locally crafted source for immune-boosting probiotics. Proudly sourcing our ingredients as local, organic, and fair-trade as we can get them!

Butterfly Herbs

232 N. Higgins (406) 728-8780
butterflyherbs.com

The essence of Missoula. Wide selections of coffees, teas, spices, botanicals, and toiletries. Montana-made and imported gifts. Espresso Bar nestled in the back.

Grizzly Liquor

110 W. Spruce (406) 549-7723
grizzlyliquor.com

Missoula's libation station, offering local and world-wide distilled spirits, wines of all kinds, and gifts for those who imbibe.

KornUtopia

617 S. Higgins, Ste. C
(406) 544-9550 kornutopia.com

Popcorn in a whole new dimension. Cooked in a kettle; lightly coated with sugar and salt. Flavors of all kinds. Vending and wholesale.

Lake Missoula Tea Company

136 E. Broadway (406) 529-9477
lakemissoulatecompany.com

Tea products from around the world and the supplies for brewing and serving great tea at home.

Liquid Planet

121 W. Broadway (406) 552-4447
liquidplanet.com

A little "city" with big Missoula flair offering an incredible selection of liquid beverages and accessories.

Market on Front

201 E. Front (406) 541-0246
marketonfront.com

Market on Front offers a variety of chef-inspired prepared foods, sandwiches, salads and soups. Most ingredients are natural or organic and as many are locally grown.

Missoula Wine Merchants

311 N. Higgins (406) 926-1911
missoulawine.com

Specialty wine shop with an extensive selection of wine, beer, cheese, charcuterie and gifts with focus on small producers and harder-to-find wines.

Gifts & Home Decor

Import Market

201 W. Broadway (406) 728-2175
theimportmarket.com

Offering great prices on furniture, home decor, jewelry, gift items and so much more. Come check out Missoula's best-kept secret.

Jeannette Rankin Peace Center

519 S. Higgins (406) 543-3955
jrpc.org

Unique fair-trade gift shop on the Hip Strip, supporting the non-profit organization dedicated to promoting peace locally and globally.

Montana Decor

135 E. Main (406) 550-2762
montanadecor.com

A shop specializing in Mountain Modern furnishings and home décor. We have taken special care to procure furnishings, art, rugs, bedding and home décor for that 'Made for Mountain Living' feel.

Mori Furniture Design

500 E. Spruce, Ste. A
morifurnituredesign.com

Noteworthy Paper & Press

219 S. 3rd W. (406) 541-6683
noteworthystore.com

Missoula's letterpress boutique and gift shop, specializing in stationery, custom invitations, holiday cards, thermography, engraving, letterpress printing, custom illustration, calligraphy, and more.

Rockin' Rudy's

237 Blaine 542-0077
rockinrudys.com

Missoula's most fun shopping experience, offering music, jewelry, clothing, scarves, posters, cards, toys, skin care products, and more. Open daily.

Home Renovation

Home ReSource

1515 Wyoming (406) 541-8300
homeresource.org

The ultimate recycle, repurpose, reuse building center, full of reusable building materials with the end goal of building a more sustainable community.

Missoula ReStore

3655 Highway 200 E.
(406) 549-8215
Habitatmsla.org/restore

Accepting and reselling donated home and business building materials and supplies and using those donations to build family homes in Missoula.

Montana Ace Hardware Eastgate Shopping Center

905 E. Broadway (406) 721-9690
montanaace.com

Downtown Missoula's hardware store with home and garden supplies, paint, tools and more. Open daily.

Shades Unlimited

1118 Jackson (406) 240-5405
Shadesunltd.com

Custom-ordered and installed window coverings for all business and residential needs.

Jewelry

Bathing Beauties Beads

812 Toole (406) 543-0018
bathingbeautiesbeads.com

Incredibly creative bead store, offering over 7,500 types of beads, strands, tools and supplies from vintage to semi-precious, local and around the globe.

Missoula Makers Collective

420 N. Higgins, Ste. B
(406) 788-0547

Missoula Makers Collective is here to connect the Missoula community with local makers and artists.

Sage Accessories

259 W. Front, Ste. 2
(406) 531-8259
sageaccessories.com

Designer necklaces, rings, bracelets, accessories & more to best match your style & budget.

Studio Pandora

211 N. Higgins (406) 549-5100
studiopandora.com

Custom jewelry designed by Master Goldsmith Karahan Balli, a native of Turkey. Featured elegance with elk ivory, wildlife, Montana sapphires, and more. Also in Ashland, OR.

Markets

Clark Fork Market

P.O. Box 8703 Caras Park
(406) 396-0593 clarkforkmarket.com

Lively and scenic outdoor setting for buying local fruits and vegetables, meats, poultry, fish, organic dairy products, plants and more. Saturdays May-Oct. on the Clark Fork River.

Missoula Farmers Market

Circle Square/North Higgins
P.O. Box 1716 (406) 274-3042
missoulafarmersmarket.com

Montana's longest-standing market with a keen focus on fresh produce, plants, flowers, coffee, and pastries. Saturday mornings May-Oct. and Tuesday evenings July-Sept.

Missoula People's Market

W. Pine St. P.O. Box 696
missoulasaturdaymarket.org

Open-air arts and crafts street market features gifts from local artists and craftsmen, plus import items and food vendors. Saturday mornings May-Sept.

Missoula Valley Winter Market

PO Box 8366 (406) 396-0593
Southgate Mall

Local winter farmers' market products include produce, cheeses, eggs, cured meats, frozen meat cuts, baked goods, fruit preserves, honey, soaps & lotions, and quality art & craft items

Outdoor Gear

Big Sky Bikes

809 E. Front (406) 830-3195
bigskybikesmissoula.com

Full-service bike shop with some of the best brands in the industry: Specialized, Santa Cruz, Giant, and Pivot. Excellent service and rentals.

Board of Missoula

618 S. Higgins (406) 721-7774
bomskate.com

Missoula's original skateboard and snowboard shop with clothing and shoes for all, plus a tune-up shop and an indoor mini ramp.

Missoula Bicycle Works

708 S. Higgins (406) 721-6525
missoulabicycleworks.com

Full-service bike shop emphasizing quality customer service and major brands: Kona, Cannondale, Bianchi, Orbea and Seven. Rentals and great information as well.

The Trail Head

221 E. Front (406) 543-6966
trailheadmontana.net

Downtown's outdoor recreation destination. Clothing, equipment, fly fishing shop, boat and ski rentals, and much more. Open daily and open late.

Special & Unique

Collective Elevation

211 W. Broadway (406) 600-1412

A premium Medical Dispensary offering a wide assortment of fully organic, spray-free flowers, concentrates, edibles, capsules, topicals, vaporizers, and more. Five convenient locations statewide.

The Crystal Limit

119 S. Higgins (406) 549-1729
crystallimit.com

Family-owned shop featuring the best in crystals, fossils, beads, handmade jewelry, and amazing treasures from around the world.

The Dark Room

109 W. Main; Downstairs
(406) 549-1070
darkroomofmontana.com

Photo processing and professional consulting.

Fantasy for Adults Only

210 E. Main (406) 543-1867

Video and adult entertainment store.

Meadowsweet Herbs

180 S. 3rd St. W. (406) 728-0543
Meadowsweet-herbs.com

Where Mother Nature shops! Herbs, supplements, teas, candles, essential oils, bath & body care, acupuncture, massage, Reiki, Aromatouch & more.

Office City

115 W. Broadway (406) 543-7171
missoulasofficecity.com

Missoula's longest standing store, offering a large selection of office equipment, stationary, cards pens, supplies, and furniture since 1916.

Piece of Mind

123 W. Main (406) 830-3206
pieceofmind.net

Tobacco accessories and glass art.

Skin Chic

130 E. Front (406) 541-8466
skinchic.com

Offering a multitude of medical and esthetic services to promote healthy and beautiful skin.

Smooch on Main

125 E. Main (406) 541-1600
smoochcosmeticboutique.com

Missoula's source for high-end skin care products, including bareMinerals, Philosophy, the Balm, and more.

Specticca Optical Boutique

319 N. Higgins (406) 549-5700
specticca.com

Exclusive eyeglass frames and sun-wear with prescriptions filled by certified opticians. Free shipping.

Toiffer Pet Outfitter

422 N. Higgins (406) 540-4334
toiffer.com

Offering a curated selection of the best products for cats and dogs. Hand-selected, researched, and often hard-to-find, our products are gentle on our planet, ethically sourced, and beautifully crafted.

Stay

Missoula is the kind of place that makes you want to linger, so staying an extra day or two or five is a great idea! You'll have much more time to explore and enjoy Downtown!

Camping

Jim & Mary's RV Park

9800 Highway 93 N. (406) 549-4416
jimandmarys.com

Locally-owned RV Park with full hookups, pull-through sites set in beautiful evergreen trees. Power, laundry, showers, visitor services, and family-friendly service included. Open year-round.

Hostels

Shady Spruce Hostel

204 E. Spruce (406) 285-1197
shadysprucehostel.com

Housed within a locally iconic Victorian lodging facility from 1887, Shady Spruce still stands as a unique and affordable resting place. This hostel aims to promote and preserve hosteling culture in a safe, efficient, and comfortable neighborly downtown Missoula vibe.

Hotels

AC Hotel

175 N. Pattee (406) 549-0119
marriott.com/en-us/hotels/msoac-ac-hotel-missoula-downtown

Our new Missoula hotel offers an intuitive experience that ensures you won't miss a beat during travel. Rest well in our guest rooms with work stations, modern decor, and city views. Fuel up with European-inspired dining and drinks at AC Kitchen, AC Lounge, and our rooftop bar.

Broadway Inn & Conference Center

1609 W. Broadway (406) 532-3300
broadwayinnmissoula.com

Centrally located and quiet, this full-service hotel features 79 rooms, complimentary breakfast, fitness center, heated pool and hot tub, plus the new Still Room Bar & Grill.

City Center Motel

338 E. Broadway (406)-543-3193
missoulacitycenter.com

Newly-renovated hotel across the river from UM with complimentary breakfast, fitness center, meeting rooms, and next door to Missoula College.

Comfort Inn University

1021 E. Broadway (406) 549-7600
missoulacomfort.com

Newly-renovated hotel across the river from UM with complimentary breakfast, fitness center, meeting rooms, and next to Missoula College.

DoubleTree Hotel

100 Madison (406) 728-3100
doubletree.com

A full-service hotel across the Clark Fork River from the University of Montana with ample conference space and fine dining at the FINN Restaurant.

Holiday Inn

Missoula Downtown

200 S. Pattee (406) 721-8550
himissoula.com

Newly renovated, full-service hotel with 200 guest rooms located on the Clark Fork River east of Caras Park. Featuring 8,000 sq. ft. of banquet and meeting space, an indoor pool and recreation area.

Stay in the Heart of Downtown!



*Just steps away from everything
uniquely Missoula!*



Holiday Inn

Missoula Downtown

MISSOULA'S LARGEST FULL-SERVICE HOTEL:

- Newly Renovated, 20,000 sf of Flexible Meeting Space
- Pet-Friendly
- Lobby Bar
- Full-Service Restaurant & Bar
- Grab & Go Market
- Espresso Bar

COMPLIMENTARY FEATURES:

- Guest Parking (*a rarity in Downtown*)
- Indoor Pool
- Fitness Center
- High-Speed Wi-Fi
- Airport Shuttle
- Area-Wide Transportation

200 S. Pattee Street ■ Missoula ■ (406) 721-8550
HolidayInn.com/MissoulaDwtn

Residence Inn by Marriott

125 N. Pattee (406) 542-6252
marriott.com/hotels/travel/msori-residence-inn-missoula

A new extended-stay hotel located in the historic Missoula Mercantile with suites featuring separate living & sleeping areas, fully equipped kitchens, complimentary breakfast, fitness center and rooftop courtyard.

Staybridge Suites

120 Expressway (406) 830-3900
staymissoula.com

Extended stay hotel near North Reserve with spacious suites, fully-equipped kitchens, complimentary breakfast, and mid-week business receptions with appetizers and beverages.

The Wren

201 E. Main (406) 401-4400
wrenmissoula.com

Located in the heart of Downtown Missoula, The Wren Hotel offers 73 one-of-a-kind guestrooms designed with the Missoula traveler in mind. Each room tells an authentic Montana story about the adventures you can uncover right out our front door.

Vacation Rentals

Hip Strip Apartments at the Penwell Building

107 S. 3rd St. W. (406) 370-9400
Vacation rentals in the Historic Penwell Building built in 1910.

Missoula Red Room

110 E. Broadway, Ste. 302
missoularedroom.com
Deluxe apartment lounge for events, private parties, vacation rentals and more.

Stay at the Wilma

131 S. Higgins Wilma Building
stayatthewilma.com
Stay in one of 10 condos in the recently-renovated Historic Wilma Building, overlooking Caras Park, and located at the epicenter of Downtown Missoula.

Mariposa Cottage

438 E. Broadway (406) 550-2511
vrbo.com/1381649
Heart of Downtown Retreat in a fully renovated 1930s cottage suite that sleeps one to four people.





MONTANA

Support Downtown Missoula
when you register your vehicle!

406

When you choose this license plate design, \$20 of the fee helps fund projects to keep Downtown Missoula vibrant and a place for all to enjoy!



Learn more about the
Missoula Downtown Foundation
at missouladowntown.com/mdf

Play

Missoula provides a mecca of playground space for both adults and children. As Montana's most culturally-diverse community, Missoula offers an incredible number of entertainment, culture, music, art, and family oriented activities. Outdoor recreation opportunities are abundant throughout the year.

Community Centers

Missoula Public Library

455 E. Main (406) 721-2665
missoulapubliclibrary.org

Missoula Public Library provides programs, materials, and services to meet the informational, cultural, recreational and educational needs of the community.

Zootown Arts Community Center (ZACC)

216 W. Main (406) 549-7555
zootownarts.org

Community art center offering accessible life-enriching experiences through classes for youth and adults, gallery shows, music, art, camps, and more.

Children & Family Activities

A Carousel for Missoula & Dragon's Hollow

101 Carousel Drive (406) 549-8382
carouselformissoula.com

The only hand-carved Carousel built by volunteers west of the Mississippi River since the Great Depression, plus the outdoor playground, gift shop, and more.

Currents Aquatic Center

600 Cregg Ln. (406) 721-PARK
ci.missoula.mt.us/165/Currents-Aquatic-Center

Indoor water park in McCormick Park featuring a children's water playground, fitness pool, two water slides, and a sparking spa.

Families First Learning Lab

455 E. Main (406) 721-7690
familiesfirstmt.org

Families First Learning Lab works to strengthen families through education, connection, play, and partnership.

Garden City Ballet

P.O. Box 3555 (406) 240-6042
gardencityballet.org

A community-focused ballet company committed to inspiring Missoula dancers and sharing quality performances with Western Montana.

Glacier Ice Rink

1101 South Ave. West
(406) 728-0316 glaciericerink.com

Missoula's premiere ice arena with two sheets. Home to Missoula youth hockey, Bruins semi-professional hockey, ice skating and curling for children and adults. Located at the Missoula County Fairgrounds.

Mismo Gymnastics

2430 Benton (406) 360-4778
mismogymnastics.com

A fun, loving environment where challenge is embraced and joy comes from learning through gymnastics and cheer, including open gym time and toddler play groups.

Missoula Butterfly House & Insectarium

P.O. Box 8885 (406) 214-5036
Missoula County Fairgrounds (June 2023)
missoulabutterflyhouse.org

Learn about butterflies, millipedes, arthropods, and more with experiences for children of all ages.

SpectrUM Discovery Science Museum

455 E. Main (406) 728-7836
umt.edu/spectrum

Missoula's public science museum with focus on fun science education, as well as summer camps, after school programming, birthday parties.

Splash Montana

3001 Bancroft (406) 542-WAVE
ci.missoula.mt.us/169/Splash-Montana


Open June - August, features three exciting three-story waterslides, kiddie Grizzly slide, lazy river with a wild river branch, floating play structures, Olympic sized pool, Crazy Creek Café, and Fireline Grill.



One FREE Ride*
for up to four children (under age 12) in your group.

*With this coupon only. One coupon per person (or group) per day. Expires 10/31/2023. No cash value.

Learn more at carouselformissoula.com
or call **406-549-8382** • Caras Park on the river
Usually open 11AM - 5:30PM, Sept.-May, 11:00AM - 7:00PM June-Aug.



zacc

Cultivating community through accessible arts experiences for all.

216 W Main St in Downtown Missoula | zootownarts.org

Entertainment

Westside Theater & Bare Bait Dance

1200 Shakespeare, Ste. 2
(406) 493-0123
thewestsidetheater.com

Artist-run nonprofit theater and studio space committed to developing and presenting live performance with a focus on movement and aerial arts.

Legacy Lounge

529 S. Higgins (406) 439-3930
legacyloungemt.com

Legacy Lounge is a small music venue and gallery on the Hip Strip. Come by and see some art that you might not see in a traditional gallery show and listen to music by some of Missoula's best underground DJs.

MCT, Inc. – Center for the Performing Arts

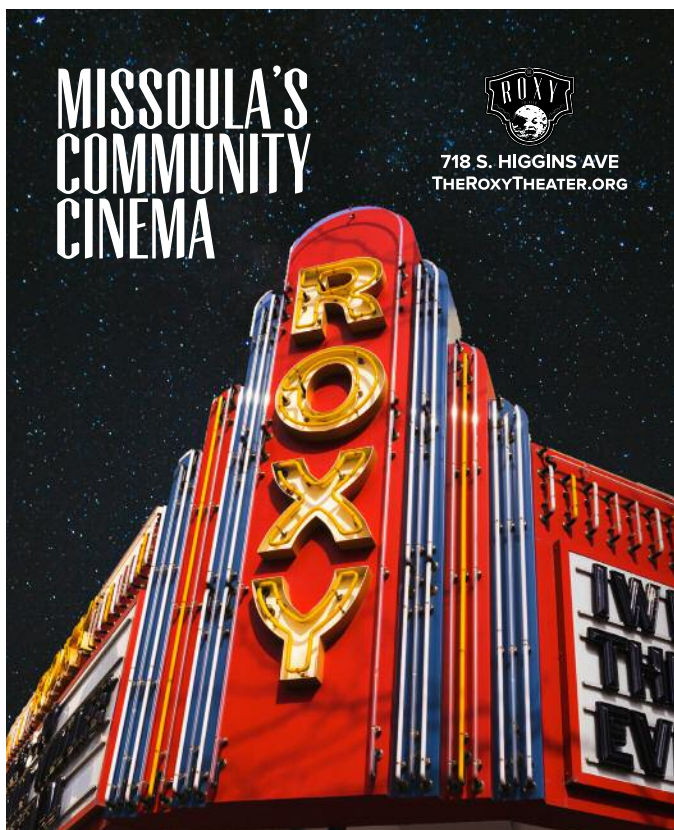
200 N. Adams (406) 728-1911
mctinc.org

World-famous Missoula Children's Theatre and the Missoula Community Theatre focused on building creativity, social skills, and self-esteem through touring and home theater productions.

Missoula Paddleheads Professional Baseball

700 Cregg Ln. (406) 543-3300
gopaddleheads.com

Affordable Family Fun Entertainment! Best Record in all of Pro Baseball, 2021 & 2022! They play at Ogren Park Allegiance Field at 700 Cregg Ln.



Missoula Symphony Association

320 E. Main (406) 721-3194
missoulasympphony.org

Missoula's Symphony Orchestra and Chorale, featuring high-quality musicians, 10 live performances annually, and music education and outreach throughout the year.

The Roxy Theater

718 S. Higgins (406) 728-9380
theroxytheater.org

Missoula's little Hip Strip theater features new and old releases of independent, foreign and classic films, theater, and community events.

Festivals

Big Sky Documentary Film Festival

Late February Downtown
(406) 541-3456 bigskyfilmfest.org

One of Missoula's wintertime assets each February, hundreds of non-fiction films are annually adjudicated and showcased during a week-long festival for all.

Missoula on Main (formerly First Night)

New Year's Eve (406) 541-0860
missoulaonmain.org

Missoula's New Year's Eve Celebration of the arts with a street party and several venues Downtown.



**Connecting Art, Culture
& Community Through
Education, Advocacy,
& Celebration**

ARTSMISSOULA.ORG



International Choral Festival

312 E. Pine (406) 721-7985

choralfestival.org

Promoting artistic excellence, global understanding, friendship, and goodwill through choral music every three years. Enjoy world-class choirs, social activities, and sightseeing.

International Wildlife Film Festival

Late April Downtown (406) 728-9380

wildlifefilms.org

More than 40 years of showcasing wildlife, habitat, people, and nature. WildWalk Parade, WildFest, and a full week of films at the Roxy Theater.

Montana Brewers' Festival

Fall in Caras Park

montanabrewers.com

Celebrating the vast growth of the craft brew industry in Montana with an annual statewide brewfest and gathering of creative entrepreneurs giving rise to the trade.

Montana Festival of the Book

September or October in Downtown

(406) 243-6022

montanabookfestival.org

An annual celebration of the written word, featuring authors, readings, receptions, education, book stores, and more.

River City Roots Festival

Late August at Main & Ryman

(406) 543-4238

rivercityrootsfestival.com

Missoula's Signature Celebration, Roots Fest is a two-day, admission-free music and art festival for the entire family. Hosted by the Missoula Downtown Association.

Sunday Streets

Dates Vary

missoulainmotion.com/SSM

Missoula's open streets initiative promoting active transportation, community health, public space, and local business. Hosted by Missoula in Motion.

Museums & History Centers

Boone and Crockett Club & Visitors Gallery

250 Station (406) 542-1888

boone-crockett.org

With a focus on conservation, ethics, and big game hunting, folks can see extraordinary animals at the visitor center inside the Historic Milwaukee Station.

Historical Museum at Fort Missoula

Building 322 at Fort Missoula

(406) 728-3476

fortmissoulamuseum.org

Missoula's history lives here in 13 historic structures and multiple exhibits that tell of the story of trade, imprisonment, forestry, and fire.

Missoula Art Museum

335 N. Pattee (406) 728-0447

missoulaartmuseum.org

Missoula's flagship and admission-free art institution, featuring a brand new outdoor Art Park and eight galleries showcasing diverse and engaging contemporary local and international artists.

Montana Museum of Art & Culture

Performing Arts TV Center University

of Montana (406) 243-2019

umt.edu/montanamuseum

Home to one of the oldest and most prominent collections in the Rocky Mountain West, the state museum of fine art connects Montana to the world.

Montana Natural History Center

120 Hickory (406) 327-0405
MontanaNaturalist.org

Showcasing Montana's natural environments, and educating teachers and children about the natural history of the Northern Rockies.

National Museum of Forest Service History

6305 Highway 10 West
(406) 541-6374

forestservicemuseum.org

Missoula's newest museum dedicated to the history, education and collection of the USDA Forest Service. Located one mile west of the Missoula Airport.

Rocky Mountain Elk Foundation

5705 Grant Creek
(406) 523-3495 elkfoundation.org

Focused on the preservation of elk and wildlife habitat, and hunting heritage, RMEF has an extraordinary visitors center filled with animal education exhibits.

Miscellaneous

Clark Fork Yacht Club

509 S. Higgins, Ste. 3366
(406) 546-4555
clarkforkyachtclub.com

No tubes? No wheels? No problem. Clark Fork Yacht Club is Missoula's new way to float the river. The Yacht Club provides everything you need to float the river, minus the hassle and with flamingo pink tubes.

The Clay Studio

1106 Hawthorne (406) 543-0509
theclaystudioofmissoula.org

Classes for all ages and skill levels, studio rentals, exhibitions, and pottery and sculpture for sale.

Missoula Fairgrounds Events Center

1101 South Ave. W. (406) 721-3247
missoulafairgrounds.com

Missoula County's 48 acre campus in the heart of Midtown, featuring multiple and historical buildings, Montana's premier hockey rinks, and the Western Montana Fair each August.



Business & Services

Downtown Missoula has a wealth of businesses and non-profit organizations that provide a wide variety of services to the Missoula community and beyond. Whatever you need, Downtown is sure to have it!

Accounting

Boyle, Deveny & Meyer

305 S. 4th E., Ste. 200
(406) 721-3555 bdmcpa.com

JCCS

321 W. Broadway, 4th Floor
(406) 549-4148 jccscpa.com

Wipfli, LLP

101 E. Front, Ste. 301
(406) 728-1800 wipfli.com

Architecture & Planning

A&E Design

222 N. Higgins (406) 721-5643
ae.design.com

Cushing Terrell

306 W. Railroad, Ste. 104
(406) 728-9522 ctagroup.com

Gavin-Hanks

Architectural Studio

1605 Stephens (406) 543-1477
gavin-hanks.com

MMW Architects

125 W. Alder (406) 543-5800
mmwarchitects.com

Orion Planning + Design

1105 Village Way (419) 297-1604
orionplanningdesign.com

OZ Architects

531 N. Higgins (406) 728-3013
oza.com

Paradigm 3 Architecture

125 ½ W. Main (406) 549-6120
paradigmv3.com

Kent Watson

225 Black Pine Tr. (406) 721-3500

ATM/Credit Card Processing

American ATM

(406) 529-9377
missoulamobileatm.com

ATM of Montana

(406) 721-4377

Automotive

AAA Mountain West

1200 S. Reserve, Ste. B
(406) 829-5509 aaa.com

Midas Auto Service

332 S. Orange (406) 728-7760
midas.com

Noon's Gas Station & Convenience Store

540 E. Broadway (406) 721-5968
noons.com

Roemer's Point S Tire & Auto

240 E. Broadway (406) 549-6425
www.tirefactory.com/roemers

Banking

Bank of Montana

125 Bank St. (406) 829-2662
bankofmontana.com

Clearwater Credit Union

126 W. Spruce (406) 523-3312
Clearwatercreditunion.org

Farmers State Bank

3130 N. Reserve (406) 829-5000
farmersbank.com

First Interstate Bank

101 E. Front (406) 523-4304
firstinterstatebank.com

First Montana Bank

201 N. Higgins (406) 829-2666
firstmontanabank.com

First Security Bank

150 W. Broadway & 541 E. Broadway
(406) 728-3300 fsbmsla.com

Opportunity Bank of Montana

200 N. Higgins (406) 542-1500
opportunitybank.com

Park Side Credit Union

320 W. Broadway (406) 728-4475
parksidefcu.com

Stockman Bank of Montana

321 W. Broadway (406) 258-1400
stockmanbank.com

TrailWest Bank

218 E. Main, Ste. A (406) 541-4246
familyofbanks.com

U.S. Bank

209 E. Spruce (406) 523-2404
usbank.com

Beauty

Agate Salon

212 E. Main (406) 926-1393
agatemissoula.com

Blaque Owl Tattoo

307 N. Higgins (406) 543-0688
blaqueowltattoo.com

Boom Swagger Salon

204 S. 3rd W. (406) 830-3192
boomswaggersalon.com

Cedar Creek Salon & Day Spa

110 Caras Drive (406) 543-0200
cedarcreekspa.com

Compass Barbershop

736 S. Higgins (406) 926-1778
compassbarber.com

Meadowsweet Herbs

180 S. 3rd W. (406) 728-0543
meadowsweet-herbs.com



Locally Owned Since 1953
Open Weekdays 8 to 5:30

ROEMER'S **point S**
TIRE & AUTO SERVICE

240 E. Broadway in Downtown Missoula
406-549-6425

Moxie Makeup & Lash Studio

134 W. Broadway (406) 540-4229
montanamakeup.com

Skin Chic

130 E. Front (406) 541-8466
skinchic.com

Smooch on Main

125 E. Main (406) 541-1600
smoochcosmeticboutique.com

**Beverage
Distributers****Culligan Water**

2020 Ernest (405) 721-1991
mtculligan.com

Missoula Bottling Co.:**Pepsi-Cola**

339 International Dr. (406) 543-8281

Summit Beverage

3299 Flynn Ln. (406) 541-3900
summitbeverage.com

Zip Beverage

1301 Scott (406) 728-9543
zipbeverage.com

**Business Consulting
Services****ATG/Cognizant: Advanced
Technology Group**

945 Wyoming, Ste. 340
(406) 205-4899 atginfo.com

Badenoch Consulting

336 S. 5th E. (406) 728-7321

Big Sky Public Relations

202 W. Spruce (406) 261-7665
Bigskypublicrelations.com

Brock Development

(406) 370-8816

**Cascadia Business
Development**

269 W. Front (406) 239-3547
cascadiabusiness.com

CDA

1330 W. Broadway (406) 926-3313
cdainteriors.com

Historical Research Associates

125 Bank St., 5th Floor
(406) 721-1958 hrassoc.com

Holly Truitt Consulting

(406) 829-8898
hollytruittconsulting.com

Janna Lundquist Consulting

(406) 531-4658 jannalundquist.com

McArthur Consulting

3406 W. Central (406) 370-4653

MoFi

229 E. Main (844) 728-9234
mofi.org

Murphy Business Brokers

330 E. Main (406) 270-3382
murphybusiness.com/missoula

Q Hospitality Management

(425) 654- 5555

Shannon O'Brien, LLC

101 E. Broadway, Ste. 204
(406) 274-3805

City of Missoula**Mayor's Office**

435 Ryman (406) 552-6001
ci.missoula.mt.us/mayor

**Missoula City-County
Health Department**

301 W. Alder (406) 258-4775
Missoulacounty.us

**Missoula In Motion & Missoula
Bicycle/Pedestrian Office**

435 Ryman (406) 552-6675
missoulainmotion.com

Missoula Parking Commission

128 W. Main (406) 552-6250
ci.missoula.mt.us

Missoula Parks & Recreation

600 Cregg Ln. (406) 552-6254
missoulaparks.org

**Missoula Redevelopment
Agency**

140 W. Pine (406) 552-6160
ci.missoula.mt.us

Computers & Connectivity

Access Montana

300 Main, Ronan, MT
(406) 676-2500 accessmontana.com

Blackfoot

1221 N. Russell (406) 541-5000
blackfoot.com

First Call IT

500 N. Higgins (406) 721-4592
firstsolution.com

Fisher's Technology

2825 Stockyard Rd. (406) 370-8458
fisherstech.com

Morrison-Mairle Systems

1055 Mount (406) 542-4855

Submittable

101 E. Front, Ste. 500
(855) 467-8264 submittable.com

WaterColor Computer Training

327 E. Broadway (406) 542-1573
watercolorct.com

Contractors

Dick Anderson Construction

7168 Expressway (406) 721-8912
daconstruction.com

Jackson Contractor Group

P.O. Box 967 (406) 542-9150
jacksoncontractorgroup.com

Liberty Electric Inc

9660 Summit Dr. (406) 721-4177
libertyelectricinc.com

Poteet Construction

3460 Grant Creek Rd.
(406) 728-9370
poteetconstruction.com

Scariano Construction

2016 Strand (406) 728-7549
scarianoconstruction.com

Co-Working

Bike & Type

415 N. Higgins (406) 203-4467

C-3 WorkLounge

945 Wyoming, Ste. 150
(406) 552-1771 c3worklounge.com

The Sidecar

225 W. Front (406) 282-1036
thesidecar.club

Custom Apparel & Products

Exact Image

1942 Birch (406) 549-3575
exactimagemt.com

The Shirt Shop

740 River St. (406) 728-5671
shirtshop.biz

Stitches Embroidery & Screen Printing

939 Stephens (406) 549-2632
stitchesmontana.com

Education & Training

Child Care Resources

500 N. Higgins (406) 728-6446
childcareresources.org

Head Start

1001 Worden (406) 728-5460
childstartinc.net

Missoula County Public Schools

909 South Ave. W. (406) 728-2400
mcpsmt.org

Missoula Writing Collaborative

#28 Officers' Row Ste. 2
Fort Missoula (406) 549-3348
missoulawritingcollaborative.org

Rocky Mountain School of Photography

301 Expressway, Ste A
(406) 543-0171 rmsp.com

Employment & Labor

Lynda Brown

HR Management Consulting
10025 O'Brien Cr. (406) 360-4869

Missoula Job Service

539 S. 3rd St. W. (406) 728-7060
employmissoula.com

Engineering

DCI Engineers

131 W. Main (406) 721-7315
dci-engineers.com/bceweb

DJ&A, PC

2000 Maple St. djanda.com

Eclipse Engineering, Inc.

113 W. Main, Ste. B (406) 721-5733
eclipse-engineering.com

IMEG

1817 South Ave. W., Ste. A
(406) 721-0142
imegcorp.com/location/missoula/

Morrison-Maierle

1055 Mount Ave. (406) 542-8880
m-m.net

WGM Group

1111 E. Broadway St. (406) 728-4611
wmggroup.com

Event Support Services

Black Knight Security & Investigations

P.O. Box 1056 (406) 493-0806

Eastgate Rental & Party Center

500 E. Spruce (406) 549-5114
eastgaterental.com

North Star Security

(406) 290-3750
northstarsecuritymt.com

Sweet Pea Sewer & Septic

9424 Futurity Dr. (406) 728-3533
sweetpeamt.com

Financial: Investment Planning Services

Glacier Wealth Management

(406) 327-0112
glacierwealthmanagement.com

D.A. Davidson

283 W. Front, Ste. 101
(406) 543-8244 dadco.com

Merrill Lynch

330 N. Higgins (406) 829-2440
ml.com

Nimlos Financial

1821 South Ave W., Ste 400
(406) 493-1192 nimlosfinancial.com

RBC Wealth Management

125 Bank St., Ste. 700
(406) 728-0035
rbcwmfa.com/missoula

S.G. Long Financial

283 W. Front, Ste. 302
(406) 721-0999 sglong.com

Willow Creek Capital Management

432 W. Spruce, Ste. 102
(406) 830-3286
raymondjames.com/willowcreekcm

Health & Fitness

Big Sky ATA Black Belt Academy

1555 Liberty Ln., Ste. A
(406) 549-8206 bigskyata.com

Cryo Method

111 W. Broadway (406) 926-2500
cryomethodmt.com

Endurance Physio

214 E. Main (406) 926-2150
endurancephysio.net

PEAK Health & Wellness

150 E. Spruce &
5000 Blue Mountain Rd.
(406) 521-3344 peakmissoula.com

Sobbacycle

160 E. Front (406) 730-8744
sobbacycle.com/missoula

Studio Sweat

113 W. Broadway (406) 926-6533
sweatmsla.com

VRTX Fitness

255 S. Russell (406) 541-3114
vrtxfitness.com

Health Care

Auberge at Missoula Valley

3620 American Way (406) 542-7009
frontiermgmt.com

Axis Physical Therapy

301 E. Broadway (406) 542-3333
axispt.org

Blue Mountain Clinic

610 N. California (406) 721-1646
bluemountainclinic.org

Craig Ravesloot, PhD

101 E. Broadway (406) 926-2500

Harvest Wholeness Center

410 W. Spruce (406) 214-3974

Lambert Family Chiropractic

1290 S. 3rd W. (406) 541-9355
lambertfc.com

Montana RX Compounders

111 N. Higgins (406) 542-2888
montanacompoundingrx.com

Planned Parenthood of Montana

219 E. Main (406) 728-5490 ext. 31
plannedparenthood.org/montana

Hospitals

Community Medical Center

2827 Fort Missoula Rd.
(406) 327-4152 communitymed.org

Providence St. Patrick Hospital

500 W. Broadway (406) 543-7271
providence.org

Housing

Clark Fork Riverside/Manor

301 W. Front (406) 721-2439

Old Sawmill District

875 Wyoming (406) 203-3015
oldsawmilldistrict.com

ROAM Student Living

301 E. Front (406) 258-7460
liveatroam.com

Insurance

AAA Mountain West

1200 S. Reserve, Ste. B
(406) 829-5509
mountainwest.aaa.com

ATTIC: American Trucking & Transportation Insurance Co.

228 W. Main (406) 523-3889
atticrrg.com

Farm Bureau Financial Services

2813 Connery Way (406) 728-6811
agentwilljohnson.com

Hale Insurance Agency

415 N. Higgins, Ste. 103
(406) 721-1311
farmersagent.com/chale

Misti Svoboda - State Farm Insurance

101 E. Front (406) 552-0730

New York Life

1806 South Ave. W. (978) 836-7987

PayneWest Insurance

2925 Palmer, Ste. B (406) 728-2910
pfgworld.com

Rowe & Associates

530 N. Orange (406) 721-5888
roweandassociatesmt.com

Legal Services

Bennett Law Office

124 W. Pine (406) 543-5803
bennettlawofficepc.com

Boone Karlberg, PC

201 W. Main, Ste. 300
(406) 543-6646 boonekarlberg.com

Browning, Kaleczyc, Berry & Hoven, PC

201 W. Railroad, Ste. 300
(406) 443-6820 bkbh.com

Carey Law Firm

P.O. Box 8234 (406) 728-0011
carey-law.com

Cederberg Law Offices

2625 Dearborn (406) 721-2100

Clark Fork Law Offices

202 W. Spruce St. (406) 728-0168

Crowley Fleck, PLLP

305 S. 4th St. E. (406) 523-3600
crowleyfleck.com

**Datsopoulos, MacDonald
& Lind, PC**

201 W. Main, Ste. 201
(406) 728-0810 dmlaw.com

Dorsey & Whitney, LLP

125 Bank St., Ste. 600
(406) 721-6025 dorsey.com

**Garlington, Lohn &
Robinson, PLLP**

350 Ryman (406) 523-2500
garlington.com

Morgan Law Offices

210 E. Pine (406) 830-3875
mtbankruptcylawyers.com

Parsons Behle & Latimer

127 E. Main, Ste. 301
(406) 317-7220 parsonsbehle.com

Rasmusson Law Offices, PLLC

218 E. Front, Ste. 200
(406) 549-3323 rasmussonlaw.com

**Rhoades, Siefert
& Erickson, PLLC**

430 N. Ryman, 2nd Floor
(406) 721-9700 montanalawyer.com

Smith & Stephens, PC

315 W. Pine (406) 721-0300
smithandstephenspc.com

Tranel Law Firm

401 Washington (406) 926-2662
tranelfirm.com

Williams Law Firm, PC

235 E. Pine (406) 721-4350
wmslaw.com

Worden Thane, PC

321 W. Broadway, Ste. 300
(406) 721-3400 wthlaw.net

**Marketing &
Graphics****Andy Commons
Internet Marketing**

(406) 529-3846 andycommons.com

Art & Image Design

P.O. Box 8092 (406) 218-8545
artandimage.biz

Big Sky Public Relations

(406) 261-7665
bigskypublicrelations.com

Digital Marketing Missoula

1923 E. Broadway (406) 880-8996
digitalmarketingmissoula.com

Etchart Creative

(406) 839-5793 etchartcreative.com

Gecko Designs

523 N. Higgins (406) 662-1123
geckodesigns.com

LumenAd/Pathlabs

111 N. Higgins, Ste. 500
(406) 552-1022 LumenAd.com

Marketplace Media & Events

225 W. Front marketplacemt.com

**METTLE Strategic
Marketing Solutions**

2813 Connery Way, Ste. 200
(406) 529-7796 mettle.wpengine.com

Missoula Media Company

101 E. Broadway, Ste. 502
(406) 270-2344
missoulamediaco.com

On the Fly Digital Marketing

(541) 261-9070 ontheflydigital.com

Partners Creative

603 Woody (406) 541-2263
partnerscreative.com

Pintler Group

700 South Ave. W.
(585) 705-1304 pintlergroup.com

Six Pony Hitch

2010 River Rd. (406) 880-6855
sixponyhitch.com

**UM Student Survival Kit
Coupon Book - Giesa
Communications**
(425) 898-8853 the survivalkit.com

Windfall
516 S. Orange (406) 829-8200
windfallstudio.com

Media

ABC FOX Montana
2200 Stephens (406) 542-8900
ktmf.com

Gatherboard/HB Enterprises
P.O. Box 7481 (406) 880-0880
missoulaevents.net

**KFGM Missoula
Community Radio**
455 E. Main, inside Library
(406) 541-8601 1015kfgm.org

Make It Missoula
5814 Prospect Dr. (406) 721-5112
makeitmissoula.com

Missoula Broadcasting Co.
2620 Radio Way (406) 721-6800
trail1033.com

**Missoula Community
Access Television**
455 E. Main, inside Library
(406) 542-6228 mcat.org

Missoula Current
missoulacurrent.com

Missoulian
P.O. Box 8029 (406) 523-5200
missoulian.com

Montana Public Radio
32 Campus Dr. mtprr.org

Everyone is Invited at
www.MissoulaEvents.net



Missoula's ORIGINAL SOCIAL NETWORK
Your Community Events!



Mountain Broadcasting:**KMSO 102.5**

714 Kensington (406) 721-1036
mountain1025.com

VidCon / Viacom

224 W. Spruce VidCon.com

**Non-Profit:
Arts & Culture****Arts Missoula**

P. O. Box 7662 (406) 541-0860
artsmissoula.org

**Missoula Symphony
Association**

320 E. Main (406) 721-3194
missoulasympphony.org

**Non-Profit: Community
Development****Better Business Bureau**

P.O. Box 17343 (406) 215-2262
bbb.org/eastern-washington

**Missoula Building Industry
Association**

1840 South Ave. W. (406) 543-4423
buildmissoula.com

**Missoula Chamber
of Commerce**

825 E. Front (406) 543-6623
missoulachamber.com

**Missoula Community
Foundation**

508 E. Broadway (406) 926-2846
Missoulacommunityfoundation.org

**Missoula Economic
Partnership**

500 N. Higgins, Ste. 300
(406) 541-6461
missoulapartnership.com

**Missoula Organization
of REALTORS**

724 Burlington (406) 728-0560
missoularealestate.com

MOFI

229 E. Main (406) 728-9234
mtcdc.org

**North Missoula Community
Development Corporation**

1500 Burns St. (406) 829-0873
nmcdc.org

Non-Profit: Environment**Clark Fork Coalition**

140 S. 4th St. W. (406) 542-0539
clarkfork.org

**Community Food &
Agriculture Coalition (CFAC)**

328 E. Main, Ste. 1 (406) 926-1004
missoulacfac.org

Ecology Project International

315 S. 4th E. (406) 721-8784
ecologyproject.org

Five Valleys Land Trust

120 Hickory, Ste. A (406) 549-0755
fvlt.org

Garden City Harvest

1657 River Rd. (406) 523-3663
gardencityharvest.org

**Missoula Urban
Demonstration Project (MUD)**

1527 Wyoming (406) 721-7513
mudproject.org

National Wildlife Federation

240 N. Higgins, Ste. 2
(406) 541-6730 nwf.org

Watershed Education Network

802 E. Front (406) 541-9287
montanawatershed.org

**Non-Profit: Health &
Human Services****Boys & Girls Club
of Missoula County**

1515 Fairview, Ste. 243
(406) 532-1597 bgcmissoula.org

CASA of Missoula, Inc

1018 Burlington, Ste. 201
(406) 542-1208 casamissoula.org

Headwaters Foundation

119 W. Main (406) 926-6526
headwatersmt.org

Human Resource Council

1801 S. Higgins (406) 728-3710
hrcxi.org

Missoula Aging Services

337 Stephens (406) 728-7682
missoulaagingservices.org

Missoula Family YMCA

3000 S. Russell (406) 721-9622
ymcamissoula.org

Missoula Food Bank

1720 Wyoming (406) 549-0543
missoulafoodbank.org

Missoula Senior Center

705 S. Higgins (406) 543-7154
themissoulaseniorcenter.org

Montana Food Bank Network

5625 Expressway (406) 721-3825
mfbn.com

Opportunity Resources, Inc.

2821 S. Russell (406) 721-2930
opportunityresources.org

Poverello Center

1110 W. Broadway (406) 728-1809
thepoverellocenter.org

**Providence Montana
Health Foundation**

502 W. Spruce (406) 329-5640
Supportpmhf.org

Run Wild Missoula

304 N. Higgins, Alley (406) 544-3150
runwildmissoula.org

Soft Landing Missoula

939 Stephens, Ste. C (406) 493-0504
softlandingmissoula.org

Summit Independent Living

700 SW Higgins, Ste. 101
(406) 728-1630 summitilc.org

United Way of Missoula County

412 W. Alder (406) 549-6104
missoulaunitedway.com

Western Montana**Mental Health Center**

1201 Wyoming (406) 532-9900
recoverycentermissoula.org

YWCA of Missoula

1130 W. Broadway (406) 543-6691
ywcaofmissoula.org

Non-Profit: Housing**Habitat for Humanity
of Missoula**

3655 Highway 200 E.
(406) 549-8210 habitatmtsla.org

HomeWORD

1535 Liberty Ln., Ste. 116A
(406) 532-4663 homeword.org

Missoula Housing Authority

1235 34th St. (406) 549-4113
missoulahousing.org

Mountain Home Montana

2606 South Ave. W. (406) 360-4317
mountainhomemt.org

Non-Profit: Tourism**Adventure Cycling Association**

150 E. Pine (406) 721-1776
adventurecycling.org

**Destination Missoula:
Convention & Visitors Bureau**

140 N. Higgins, Ste. 202
(406) 532-3250
destinationmissoula.org

**Glacier Country Regional
Tourism Commission**

4852 Kendrick Place, Ste. 101
(406) 532-3234 glaciermt.com

Non-Profit: Miscellaneous**City Club Missoula**

P.O. Box 9071 (406) 541-2489
cityclubmissoula.org

Empower MT

2300 Regent, Ste. 101
(406) 541-6891 empowermt.org

Humane Society of Western Montana

5930 Highway 93 S. (406) 549-3934
missoulahumanesociety.org

Mavericks/Missoula Athletic Council, Inc.

(406) 721-6471 missoulamavs.com

Montana Brewers Association

P.O. Box 763, Helena, MT
(406) 439-8075 montanabrewers.org

Missoula Mavericks Legion Baseball

P.O. Box 7622 (406) 544-4433
missoulamavericks.net

VFW Post 209 "Ole Beck"

245 W. Main (406) 381-8544
vfwpost209.org

Photography

Athena Photography

415 N. Higgins (406) 531-8833
athenaphotography.com

Open Lens by Pamela

(406) 370-2704
openlensbypamela.com

Rocky Mountain School of Photography

301 Expressway, Ste. A
(406) 543-0171 rmsp.com

Printing & Copying

Advanced Litho Printing

1702 Rankin (406) 541-2576
advancedlithoprinting.com

Alphagraphics

1947 South Ave. W. (406) 728-4810
alphagraphicsmissoula.com

FedEx Office Print & Ship

130 W. Broadway (406) 728-2679
fedex.com

Kelley Connect

5650 W. Harrier (406) 549-2527
kelleyconnect.com

Missoula Copy Center

2304 McDonald Ave. (406) 549-2679
missoulacopy.com

Real Estate: Development

The Farran Group

101 E. Front, Ste. 304
(406) 541-9000 thefarrangroup.com

Main Street Enterprises

218 E. Front (406) 728-8858

University Avenue Developers

300 University Ave. (312) 403-4033

Real Estate: Misc.

Stevens & Company

116 W. Spruce (406) 721-5454

Pattee Street, LLC

125 Bank St., Ste. 500
(406) 360-9817

Real Estate: Mortgage

Guild Mortgage Company

1001 S. Higgins, Ste. 2A
(406) 258-7520
guildmortgage.com/branches/missoula

Mann Mortgage of Missoula

704 W. Sussex (406) 542-0700
missoula.mannmortgage.com

Fidelity National Title

320 W. Broadway (406) 728-1500
fnf.com

Real Estate: Realtors

Berkshire Hathaway HomeServices Montana Properties

1020 South Ave. W. (406) 329-2007
BHHHSMT.com

Clark Fork Realty

512 E. Broadway (406) 728-2621
clarkforkrealty.com

Mary Donnelly, Realtor

314 N. Higgins (406) 396-9152
bhhsmt.com

Engel & Volkers Western Frontier

321 N. Higgins (406) 926-3322
westernfrontier.evrealtestate.com

ERA Lambros

3011 American Way (406) 532-9200
eralambros.com

**Glacier Sotheby's
International Realty**
321 N. Higgins (406) 541-7020
glaciersir.com

Ink Realty Group
148 South Ave. W. (406) 728-8270
inkmt.com

**Vickie & Chris Honzel:
Lambros Real Estate ERA**
3011 American Way (406) 531-2605
findmissoulahomes.com

Matt Mellott: Sterling CRE
2829 Great Northern Loop
(406) 203-3950
sterlingcreadvisors.com

McLean Properties
323 N. Higgins (406) 546-5509
mcleanpropertiesmt.com

**Mindy Palmer, Berkshire
Hathaway HomeServices**
1020 South Ave. W. (406) 329-2055
mindypalmer.com

**Kelly Right Real Estate –
Sheila Mischke**
621 Brooks (406) 214-4046
sheilamischke.kw.com

Murphy Business Brokers
330 E. Main (406) 270-3382
murphybusiness.com/missoula/

NAI Crowley Moore
111 N. Higgins, Ste. 400
(406) 721-1111 naicrowleymoore.com

Portico Real Estate
315 S. 4th St. E., Ste. 205
(406) 327-8787 porticorealestate.com

**PureWest Christie's
International Real Estate**
101 Railroad (406) 541-4000
purwestrealestate.com

Real Estate Montana & Co.
218 E. Front (406) 543-7325
realmt.com

Recycling & Waste Management

Missoula Compost Collection
2305 South Hills (406) 370-5876
missoulacompostcollectionllc.com

Republic Services of Montana
P.O. Box 8449 (406) 543-3157
republicservices.com

Tear It Up, LLC
915 Kern St. (406) 240-7043
tearitup.biz

Sound & Audio Services

Sound Creations
(406) 544-6624
soundcreationsmt.com

Special Event Venues

**Missoula Fairgrounds
Events Center**
1101 South Ave. W. (406) 721-3247
missoulafairgrounds.com

Missoula Red Room
110 E. Broadway, Ste 302
(406) 274-3468
missoularedroom.com

Pavilion at Caras Park
123 Carousel Dr. (406) 543-4238
missouladowntown.com

Transportation Services

ASUM Office of Transportation
32 Campus Dr, UC #105
(406) 243-2045
umt.edu/transportation

Hertz Rent-a-Car
5225 W. Broadway, Ste. 12
(406) 549-9511 hertzmissoula.com

Missoula International Airport
5225 W. Broadway (406) 728-4381
flymissoula.com

Mountain Line
1221 Shakespeare (406) 543-8386
mountainline.com

University of Montana

Alumni Association

115 Brantly Hall
(406) 243-5211 grizalum.org

Experiential Learning & Career Success

Davidson 002 (406) 243-4615
umt.edu/internships

Grizzly Scholarship Association

Adams Center, Ste. 139
(406) 243-6481 gogriz.com

Information Technology Dept.

Social Sciences 120 (406) 243-4357

Office of the President

University Hall, Ste. 109
(406) 243-2317 umt.edu

Missoula College

1205 E. Broadway (406) 243-7811
mc.umt.edu

Miscellaneous

Able Tree Service

300 S. Garfield, Ste. 4
(406) 549-9310 abletreeservice.com

Big Sky Commerce

2809 Connery Way (406) 327-0611
bigskycommerce.com

Bobcats 4 Me: Carma Gilligan

P.O. Box 9344 (406) 549-8055

Fish Window Cleaning

1500 W. Broadway, Ste. E
(406) 728-5201
fishwindowcleaning.com

Hellgate Elks Lodge #383

112 N. Pattee (406) 549-0542
elks.org

Missoula Textile Services

111 E. Spruce (406) 543-5171
missoulatextiles.com

NorthWestern Energy

1801 S. Russell (888) 467-2669
northwesternenergy.com

Treehouse LLC

120 N. Higgins (406) 360-8809

Two Men and A Truck

1620 Rodgers, Ste. 2 (406) 251-9818
twomenandatruck.com/movers/mt/missoula

Worship

All Souls Missoula

130 E. Broadway (406) 529-2468
allsoulsmissoula.org

First United Methodist Church Missoula

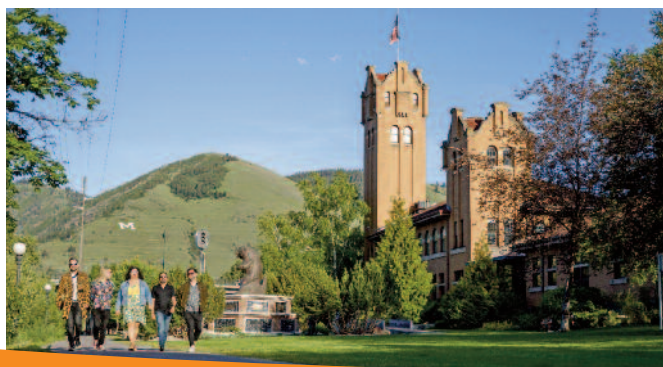
300 E. Main (406) 549-6118
firstumcmmissoula.org

Missoula Interfaith Collaborative

2205 34th Street (406) 207-8228
micmt.org

St. Francis Xavier Church

420 W. Pine (406) 542-0321
sfxmissoula.org



Downtown Historic Walking Tours April - October



missouladowntown.com/unseen-missoula



RIDE THE LINE

*for a convenient
commute.*

Enjoy zero-fare and park-free bus service 7 days and 7 nights a week.

Benefits Us All. (406) 721-3333



mountainline.com



Tours

See map page 55

Downtown Public Art

A vital component of any urban landscape, the presence of public art in a community signifies the character of the neighborhood. Downtown Missoula has a wealth of public art and culture. Listed below are over 20 works of public art on display in the Downtown area alone.

1. Peace Works

Peace Works was created by area high school students Peter Bradstock, Sarah Jackson, Amanda Keeland, Brittany Kirkland, Sarah Logan, Yuki Sugimoto, and Tara Westle with artist Amie Thurber in the summer of 2000. A mural celebrating diversity with a colorful, festive atmosphere, Peace Works is located at the rear entrance of the Jeannette Rankin Peace Center at 519 S. Higgins.

2. Myrtle Mural

Commissioned by neighboring businesses, this wheat paste mural by local artist Amber Flaherty graces the historic Penwell Building in the heart of the downtown area known as the "Hip Strip".

3. Dreaming Missoula

The Dreaming Missoula sculpture is in the Clark Fork Natural Park on the south side of the Clark Fork River near the Orange Street bridge. The sculpture was created in 1994 by Lynne Hull and Kioko Mwitki, a native of Kenya. Hull sculpted the wood elements, and Mwitki fabricated the metal components.

4. Returnings

The Returnings sculpture (pictured right) is on the East Side of the Higgins Avenue Bridge just north of the Clark Fork River. Created by Jeffrey Funk in 1989 as a project of the City of Missoula Public Art Committee, these three large bronze fish twist among boulders and are a favorite among children.

5. Untitled

The untitled mural in Bess Reed Park on the south end of Clay Street is behind the Holiday Inn Missoula Downtown along the Clark Fork River. Painted by Big Brothers Big Sisters in 1997, this mural features volunteers and children.

6. Cattin' Around

The Cattin' Around sculpture adorns Central Park parking garage in the 100 block of West Main Street. Mike Hollem created this whimsical, ferrous cement depiction of a sprawled alley cat in 1991 as a project of the City of Missoula Public Arts Committee. More recently, the sculpture has been mentioned nationally as a must see for cat lovers. A small puddle of water collects on the cats back to create a birdbath.

7. Studebaker

The Studebaker on the side of the Studebaker Building at 216 West Main Street was created by noted local artist Stan Hughes in 2000. The work pays tribute to the historical background of the Studebaker Building and the heart of the Gasoline Alley historic area, which evolved on West Main Street in the early 1900s and was a project of the City of Missoula Public Arts Committee.



8. Uptown Tiles

The Uptown Apartments, located at 329 Woody Street, has 500 colorful 6-inch ceramic tiles mounted on seven large concrete planters made by hundreds of people at a First Night Missoula celebration.

9. E.S. Paxson Murals

The E.S. Paxson Murals are located inside the Missoula County Courthouse at 200 West Broadway. Created sometime between 1912 and 1914, these historical scenes were painted on canvas with oils.

10. Veterans Memorial

The Veterans Memorial honors veterans of WWI and WWII. Located on the Missoula County Courthouse lawn on the corner of Broadway and Ryman, this cast bronze sculpture of a WWI soldier was created by J. Pauling in 1921. A 1927 plaque lists WWI veterans and a 1948 plaque lists WWII veterans..

11. The Heart of Missoula Murals

The Heart of Missoula murals are located at 111 West Broadway, at the corner of Broadway and Higgins Avenues. These murals are the result of a unique public/private collaboration between the Missoula Public Art Committee, the Missoula Redevelopment Agency, and Rick Bice. Artist Hadley Ferguson created seven large panels depicting the University of Montana and Downtown Missoula. The other five panels showcase various buildings and streets as they existed in the early 1900s and feature the Star Garage, the Kohn Clock, early newspaper publishing, Missoula railroads, and the Garden City Brewery.

12. Missoula Art Park

Completed in the spring of 2017, the Missoula Art Park is Downtown Missoula's new artistic offering. With a new outdoor gathering place complete with tables, chairs, benches, trees and plants, the Art Park offers a place for folks to linger and an outdoor restroom for the public's use. The Missoula Art Museum curates rotating art shows in the outdoor space, improving the quality of life for all.

13. Ponder

Located indoors at 140 West Pine, Ponder was designed by Mary Iverson to honor and inspire those who participate in the legislative process. As City Council and community members walk down the long corridor toward the Council Chambers, they are inspired to go through a process of clearing their minds of concerns for their personal lives, and enter the non-partisan, objective mind set required for public service.

14. Walter Hook Series

The Walter Hook Series is located inside the Chambers in City Hall at 435 Ryman Street. Painted in 1984-1985 by Missoula artist Walter Hook, the series of seven oils was purchased with the Bill Cregg Memorial Fund and was a project of the City of Missoula Public Art Committee.

15. Mountain Line Transfer Center Mural

The mural is located in the Mountain Line Transfer Center between the Missoula County Courthouse and City Hall. The mural features 200 tiles decorated with deer, eagles, bears, trout, bitterroots, roses, and other symbols that represent the natural heritage of Montana. The mural was created in April of 2000 by Missoula County Public School students with the help of their art instructors Katherine Lynch, Jackie Alford, Carla Getz and Susanne Woyciechowicz, with local artist Dana Boussard.



16. Proper Shoppers

Installed at the Mountain Line Transfer Center in 2002, the Proper Shoppers solid bronze sculpture was created by Missoula artist Tom Rippon, a ceramics professor at UM, and is a project of the City of Missoula Public Art Committee. The stylized grandmother and her favorite grandchild watch as dozens of buses and hundreds of pedestrians scurry about.

17. Virgin Mary

The Virgin Mary sculpture is set in a river cobble grotto in the side garden of St. Francis Xavier Church at 420 W. Pine Street. Sculpture and creation date unknown.

18. Wall of 100 Hearts

Located at The Heart Institute at Providence St. Patrick Hospital, these heartfelt mosaics were made by the sixth grade classes of Washington Middle School in 2002. As inspiration for the patients, each heart was created by an individual student. Teachers Joni McNeil and Mary Gillhouse coordinated with the art direction from Jayne Piazza.

19. First Night Tile Project

The First Night Tile Project is on the Northside/Westside Pedestrian Bridge near the Grand and First Street intersection. Created by children and adults who participated in the First Night Missoula public tile project on New Year's Eve 1999, these tiles were installed in April 2000. The theme features animals of all types.



20. Crossings

The Crossings sculpture is located in front of the Northern Pacific Railroad Depot at the north end of Higgins Avenue. Consisting of four large red Xs made of enamel on metal with concrete wing walls and platform set on a stone ballast, it represents railroad themes. "Crossings" is a project of the City of Missoula Public Art Committee. Created by Taag Peterson in 1986, the XXXXs relate to the tall trestles necessary for crossing mountain ravine.

21. John Mullan

The John Mullan marble sculpture is located in the plaza at the end of North Higgins Avenue in front of the Northern Pacific Railroad Depot. Created in 1914 and one of just six sculptures remaining, this structure was erected to mark the route of the wagon road, surveyed and built by John Mullan, from Fort Benton to Fort Walla Walla on the Columbia River.

22. Brennan's Wave

This Caras Park sculpture, viewing platform and whitewater feature in the Clark Fork River are named after world-class Missoula kayaker Brennan Guth, who died in Chile in 2001 pursuing his sport and passion.

23. A Carousel for Missoula

"If you will give it a home, and promise no one will ever take it apart, I will build A Carousel for Missoula." That was the promise Missoula cabinet-maker Chuck Kaporich made to the Missoula City Council in 1991. By opening day, May 27, 1995, over 100,000 hours of volunteer time had gone into the construction of 38 permanent ponies, three replacement ponies, two chariots, 14 gargoyles, gargoyle frames and mirror frames, and the largest band organ in continuous use in the United States, all within a jewel box building. You can find it at 101 Carousel Drive.

University of Montana

For more information about public artwork on the **University of Montana campus**, a map of public art is available on the Montana Museum of Art and Culture website: www.umt.edu/montanamuseum/document/campusartwalk.pdf. Over 50 works of art are available for public enjoyment.

24. Dragon Hollow

Dragon Hollow is a magical playground adjacent to A Carousel for Missoula. The playland was the combined effort of artists and consultants from Leathers and Associates, Inc. Dragon Hollow was built by 6,000 volunteers in just nine days.

25. Mountain Waters Currents Aquatic Center

The City of Missoula Public Art Committee commissioned Missoula artist James Todd to create a design to be sandblasted by Nash, Inc. on the exterior of the Currents Aquatic Center. Todd's Mountain Waters design features motifs of North-western wildlife amidst cascading waters.

26. Go with the Flow

This sculpture, which stands 20 feet tall at its highest point, is located at the Park Place Parking Structure, and tells the story of changing water, an element that designer Mike Golins speaks deeply to people in Missoula. "We fish on rivers, tube them, even", he said, "learn life lessons from their currents." Golins' design is a rolling wave that pours into a crashing one that flows into an eddy, and the entire structure points from Downtown Missoula to the Clark Fork River.

27. Roaring Through Time

This mural located on the Bank Street Staircase is a colorful snapshot of the area's ancient history with the upper crust layer as Glacial Lake Missoula. The mural was designed and painted by the Flagship Missoula Program with 96 kids and 20 adults in 2019 thanks to the Missoula Parking Commission and the City of Missoula Public Art Committee.



Other Downtown Area Public Art:

• MFD

The Missoula Fire Department mural is a bas-relief located in the arched alcove on the west side of the Missoula Headquarters Fire Station at the corner of Pine and Madison. Rudy Autio created this colorful work project of the City of Missoula Public Art Committee in 1995 with scenes relating to fire-fighting history.

• Untitled

The untitled mural at the YWCA, located at 1130 West Broadway, is a beautiful tribute to the courage and transformation of women. The mural was designed and produced in 2000 by area high school students Amanda Keeland, Melissa McNay, Carla Rothenbuecher, AC Rothenbuecher and Rachel Bailey with artist Amie Thurber.

• Flower Baskets

Designed by local artist Russell Smith, the son of Russell Smith, Sr., after whom the Federal Courthouse is named, the Downtown Flower baskets were created in two batches and hung in 1981 and 1985. Each of the 72 baskets are individually-designed and crafted with a theme of their own. The Missoula Downtown Association hangs and waters the flowers throughout the summer months.

• Boulevard Banners

The Downtown Missoula Boulevard Banner Program was created in 1999 by the Missoula Downtown Association and features Downtown landmarks on canvas banners, designed by Missoula artists and Fabricon. The program also highlights and promotes Missoula non-profit organizations. Boulevard Banners bring life, color, art, and vibrancy to the Heart of Missoula, connecting people to this special place.

• Decorative Traffic Signal Boxes:

Located at various intersections in Downtown and throughout Missoula.

For more information visit:

ci.missoula.mt.us/1245/traffic-signal-box-art

Tours

See map page 55

Historic Walking Tour

Chinese Prime Minister Zhu Rongji once said that history can never be covered up, and those words could never be truer in Downtown Missoula. Take the time to look up as you tour the many and varied historical landmarks listed below and see remnants of the past appear to you in tucked-away corners. Count the historic billboards of long-forgotten places like the Atlantic Hotel and the Diner Cafe and you will see the many layers of history in the story of Missoula.

1. Wilma Building 131 S. Higgins

Previously known as the Smead-Simons Building, this eight-story Sullivanesque-style building was commonly referred to as the Showplace of Montana after it was constructed in 1921. It was built by William Billy Simons, an early western entrepreneur, who produced Wild West shows and built several theaters in Oregon, Idaho, and Alaska during the Gold Rush. The theater became a living memorial to his wife, Edna Wilma, a famous light opera star. The historic interior of the Wilma building was most recently remodeled in 2015 with state of the art sound and lighting systems, and restoring much of the original décor making it one of the top music venues of its size in the United States. The Wilma was Missoula's first steel framed modern high-rise building.

2. Florence Building 111 N. Higgins

Constructed in 1941, the Florence Building occupies the same site as two earlier Florence Hotels, both of which burned down. Much like the east section of the Palace Hotel (Broadway & Ryman), this hotel was built to accommodate the increasing number of automobile travelers, and included an interior, multi-level parking garage. Today this excellent example of Art Moderne architecture has been converted to an office complex with retail businesses occupying the main floor. The Governor's Room, located on the second floor, is still used as a ballroom/banquet room for special events. The Lobby was recently refurbished to its original state and is also available for special events.

3. Headquarters Building / Daily Annex 113-119 W. Front

Advertised as an Ornament to the Street when constructed in 1888 as a men's social club and saloon, this building and its 1916 partner to the west, the Daily Company Annex, were remodeled over the years with wide metal panels and modern windows dominating the front facade. In 1892 the building witnessed a major fire and the mysterious murder of Maurice Higgins, son of a Missoula founder. The Headquarters' 1990s restoration captures the feel of Missoula's red-light district of the 1880s while the Daily Annex addresses the reform movement to shut down the district. Recognized with both local and state preservation awards, the Headquarters Building/Daily Annex contains a nice display of artifacts and project progress on the second floor.

4. Gleim II Building 255 & 257 W. Front

The Gleim II was a brothel owned and operated by Mary Gleim, whose splashy career included conviction for attempted murder of a rival and a prison term in Deer Lodge. Built around 1893, after two major fires swept the Downtown, this red brick, sage-green building was restored in 1995 and captured a Historic Preservation Award for that effort. This building was one of eight owned by Gleim during the peak years of Missoula's Red Light District. Mother Gleim retained title to this two-story vernacular commercial-style brick building until her death in 1914.

5. Gleim Building 265 W. Front

This classically-styled brick building served as the headquarters for Mary Gleim's bordello businesses along Front Street from early 1890s to approximately 1914. Original arches were uncovered in a 1980's renovation. Listed in the National Register of Historic Places, this building is an excellent example of Romanesque Revival architecture with its arched windows, brick pilasters, checkerboard banding, and granite sills. Through its lifetime, businesses located here included the Pullman Pool Hall (1929), Carroll Nash Cigars (1932), and the Hawthorne Club, a 1940s jazz club.

6. Studebaker Building 216 W. Main

As the automobile gained popularity in the 1910s, stables and garages existed side by side. The succession of businesses at this address documents the transition that must have been hard on the old timers. By 1921, the Main Street Motor Company advertised repairs and rental space for 70 vehicles here. Louis Nybo sold Studebakers, the choice of the Missoula police force until the 1950s.

7. Palace Hotel 147 W. Broadway

First opened as the Savoy Hotel in 1909, this building is one of the few remaining symbols of the prosperous period of time when the expansion of the railroad through Missoula enhanced the growth of the lumber and manufacturing industries. The original structure and a 1941 annex formed Missoula's largest single hotel. As time passed, the hotel's upper floors became an empty, decaying shell, but a 1995 rehabilitation project created 60 upper-floor housing units. Today the Palace Apartments beautifully illustrate how preservation can rejuvenate a city center.



8. Missoula County Courthouse 200 W. Broadway

The neo-classical style sandstone Courthouse (pictured below left) was designed by prominent local architect, A.J. Gibson, and completed in 1910. Features of the building include the impressive clock tower which houses a two-ton bell, massive ionic support columns, copper-faced entry doors, and vertical panels of beveled glass. Eight murals created by well-known western artist, Edgar S. Paxson, hang in the building's entryway and document the valley's early history.

9. Simons Block 314 N. Higgins

Built in 1899, the Simons Building is one of Downtown Missoula's newest additions to the National Register of Historic Places, earning honors in 2000. Named after Missoula businessman Louis N. Simons, the building was originally an art store that evolved into a general hardware store in the 1920s. It was also home to one of the city's last bordellos. The second floor was vacant for close to 30 years before renovations.

10. Higgins Block 202 N. Higgins

The Higgins Block, commissioned by Missoula co-founder C.P. Higgins in 1889, is Missoula's finest example of Queen Anne commercial architecture. Higgins was one of Missoula County's original county commissioners and a member of Montana's first Territorial Legislature. The Higgins Block includes the gray granite, copper-domed corner building and the red poly-chromed brick structures to the north and east. This National Register building, was restored in the early 1980s and is home to several businesses today.



11. Masonic Temple 120-136 E. Broadway

Built in 1909, the Masonic Temple is the only Beaux Arts style building in Missoula's central business district. Particularly notable for its arched bays, elaborate terra cotta cornice, frieze work, and its elevator, the building still serves as home to the Masons in addition to numerous office and retail businesses.

12. Federal Building 200 E. Broadway

Designed in the Italian Renaissance revival style and constructed of Indiana limestone and granite, this building was formerly called the Federal Building. The original building was erected between 1911-1913, and the east addition was built in 1929. The north addition was erected in 1937. Listed on the National Register of Historic Places the building housed the U.S. Federal District Court from 1929 to the mid 1990s.

13. Carnegie Library/ Missoula Art Museum 335 N. Pattee

Designed by A.J. Gibson and built in 1902-03, the Carnegie Library presents itself as a temple of learning in the style of Carnegie libraries across the country. Gibson's windows add a noticeable design aspect through their lighter-colored stone surrounds capped by keystones, which stand in high contrast to the dark brick walls. The second story, designed by Gibson's assistant, Ole Bakke, was added in 1913. The building currently houses the Missoula Art Museum. The modern addition to the south was added in 2006, and increased the usable area in the Museum by almost fifty percent.

14. Northern Pacific Railroad Depot Railroad & N. Higgins

When the track of the Northern Pacific reached Missoula in 1883, it was possibly the most significant event in the town's history. Reliable transportation created a major economic and commercial distribution hub for Western Montana. This depot building was designed by Reed and Stem, a celebrated architectural firm from St. Paul, Minn., that designed over 100 depots in America, including New York City's Grand Central Station. Built in 1901, this National Historic Register building is an architecturally significant example of simplified Renaissance Revival architecture, which represents the historic importance of rail transportation to this city.

15. St. Francis Xavier Catholic Church 420 W. Pine

Constructed between 1891 and 1892, this church is a major religious, architectural, and artistic landmark in Missoula. Its 144-foot-high polygonal tent roof spire continues to be a landmark of the Missoula skyline. The interior of this National Register church contains murals painted around 1900 by Brother J. Carignano, who also painted the murals in the St. Ignatius Mission.





Downtown Tours and Sites

- 1 **Public Art Tour**
- 2 **Historic Walking Tour**
- 🌐 **Downtown Legacy Trail**
- A **Other National Historic Register Buildings**

Missoula's Historic Districts

East Pine Street Historic District

Missoula's first exclusive residential area grew up along East Pine Street, and today it's one of Missoula's seven historical districts. The predominating man-made feature and unifying visual element of the District is its historic boulevard, which consists of approximately 15-foot-wide boulevards with large maple trees on each side of the street and a unique 25-foot-wide grass median. There are a variety of historic buildings, most of them are multi-family or single-family residences built between 1872 and 1940. All but six of the 50 major buildings were constructed before 1940. The district contains the city's oldest residence (Francis Worden House 1874), and the A.J. Gibson designed Governor Joseph Dixon mansion, both located in the 300 block of East Pine.

Southside Historic District

This colorful historic district charts Missoula's transformation from a rough frontier town to an established community. Anticipating a need to escape the flurry and bustle of Missoula's town center north of the Clark Fork River, Federal Judge Hiram Knowles platted this addition in 1890. By the mid-1890s, gracious Queen Anne style residences proclaimed the Southside as a wealthy haven. Between 1908 and 1910, the arrival of the Chicago, Milwaukee and St. Paul Railroad on the Southside's edge added the Milwaukee Depot. There are over 60 structures on the Southside Historic District walking tour.

University Area Historic District

Bounded by South 4th St. E., Beckwith Avenue, Arthur Avenue and Higgins Avenue, the University Area Historic District was officially placed on the National Register of Historic Places on December 13, 2000. Missoula's largest historic district, the University Area District contains some stunning examples of Queen Anne, Craftsman, and Revival styles of architecture.

Downtown Historic District

Bounded by the Northern Pacific Railroad, the Clark Fork River to the south, Missoula's historic downtown is Missoula's ninth Historic district. The district includes residential neighborhoods on both the east and west sides, as well as the mixed use historic core that grew up between the Northern Pacific Depot and the Missoula Mercantile, which was located next to the original Missoula Mill site. Including the East Pine Street Historic District, there are more than 450 contributing structures in the historic downtown district. More than 40 downtown buildings are individually listed in the National Register of Historic Places.

Additional Missoula area Historic Districts of interest:

- Northside Missoula Railroad Historic District
- Lower Rattlesnake Historic District
- University of Montana Historic District
- Fort Missoula Historic District
- McCormick Historic District

Downtown Legacy Trail

Created by Heritage Missoula, a program of the Downtown Missoula Partnership, the Downtown Legacy Trail leads audiences through a heritage experience that includes interpretive signage and storytelling in a self-guided format. Medallions along the trail guide users to points of interest, where you can make meaningful connections to the shared human experiences represented here.



See map page 55



Other Downtown Buildings on the National Historic Register:

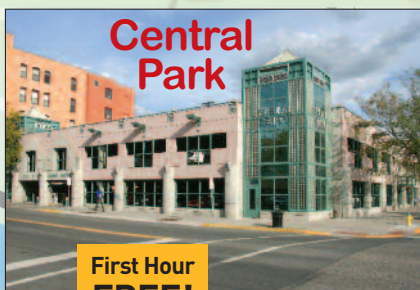
See map
page 55

- A. Atlantic Hotel**
519 North Higgins
- B. Belmont Hotel**
430 North Higgins
- C. Bluebird Building**
220 - 224 North Higgins
- D. Brunswick Hotel**
223 Railroad
- E. Forkenbrock Funeral Home**
234 East Pine
- F. Dixon-Duncan Block**
232 - 240 North Higgins
- G. Garden City Drug**
118 North Higgins
- H. Grand Pacific Hotel**
118 West Alder
- I. Hammond Arcade**
101 South Higgins
- J. Hellgate Lodge**
120 North Pattee
- K. Independent Telephone Co.**
207 East Main
- L. Knowles Building**
200 - 210 South 3rd West
- M. Labor Temple**
208 East Main
- N. Lenox Flats**
300 - 306 West Broadway
- O. Lucy Building**
330 North Higgins
- P. Marsh & Powell Funeral Home**
224 West Spruce
- Q. Milwaukee Depot**
250 Station Drive
- R. Missoula Laundry Company**
111 East Spruce
- S. Model Laundry & Apartments**
131 West Alder
- T. Montgomery Ward Building**
201 North Higgins



Parking Downtown

Missoula Parking Commission invests meter revenues into many worthwhile Downtown projects and parking structures.



Parking Information:

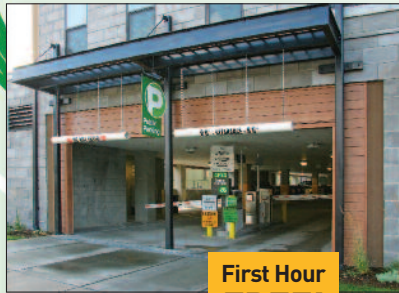
- At **Central Park, Park Place, and ROAM** the first hour is free.
- For **metered parking**, pay with the Passport Parking app OR at the multi-space parking kiosk on each block.
 - Payments are made using your license plate
 - Kiosks accept cards or coins
 - *Moving in your zone?* The time goes with you!
- Parking is free after 5pm Mon-Fri. on streets—6pm in garages, on weekends, and on Montana State observed holidays.
- For more information contact the Missoula Parking Commission.
128 W. Main St. • (406) 552-6250 • ci.missoula.mt.us/parking



Missoula Parking
Commission

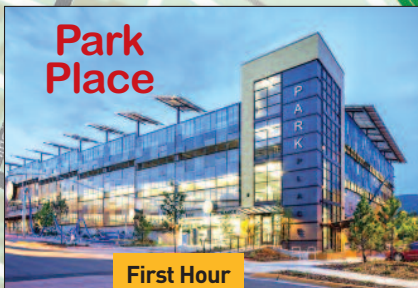
Exit
104

ROAM



**Multi-Space
Parking Kiosks**

**First Hour
FREE!**



**Park
Place**

**First Hour
FREE!**

**Central
Park**
Parking
Commission
Office

**Caras
Park**

**Bank
Street**

Park Place

ROAM

**Kiwanis
Park**

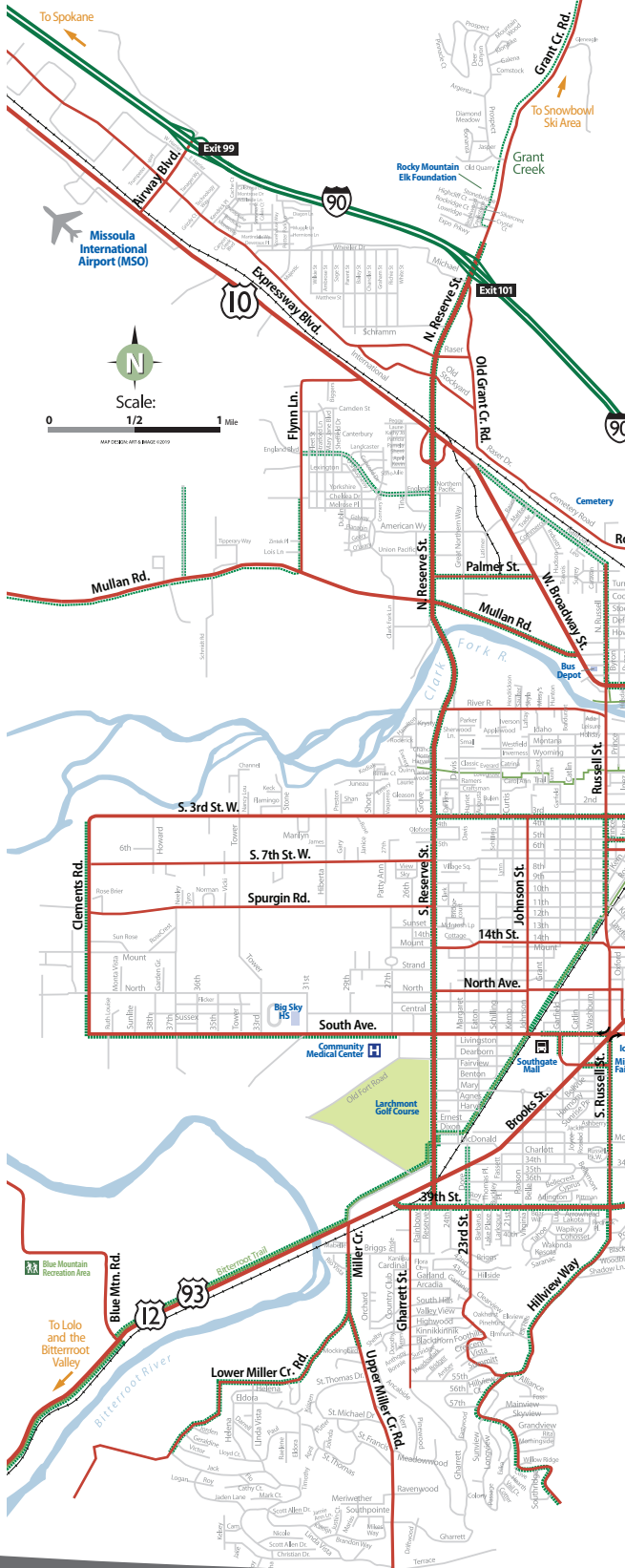
Trail System

Park. Pay. Be on your way.

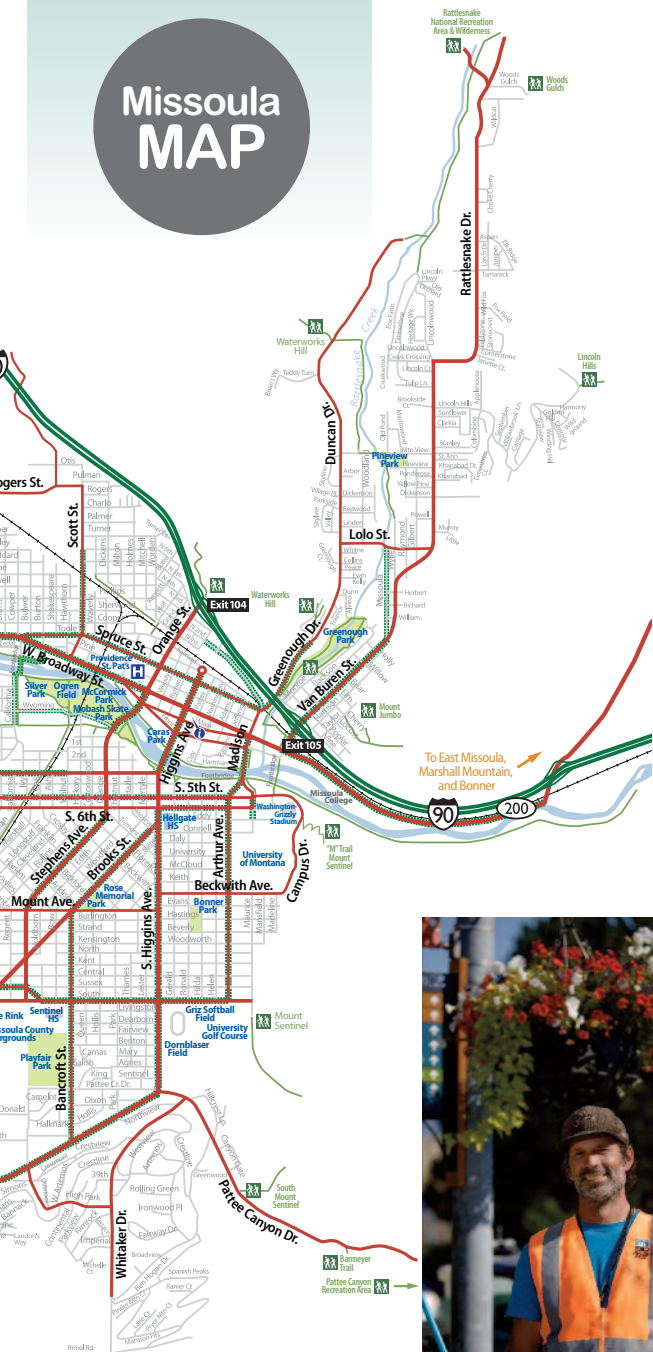


1. Download the **Passport Parking** app from the Apple App Store or Google Play store
2. Create an account with your mobile phone number or email address
3. Park anywhere you see **Passport Parking** app signs & decals
4. Pay for your parking session from your phone
5. Extend your time remotely if you'd like to stay longer!

Zone 4061 - Short-term, street **Zone 4062** - Long-term, street
Zone 4063 - Pay Lot, Bank St./New Park, E Front Lot.



Missoula MAP



Downtown MAP



0 Scale: 1/8mi

— Main Thoroughfares - - - - - Bike Paths

missouladowntown.com



Downtown Missoula Partnership

The Downtown Missoula Partnership

is a unified entity comprised of the Missoula Downtown Association, the Business Improvement District and the Missoula Downtown Foundation. Each are here to serve our community in different ways!



The Missoula Downtown Association

is a not-for-profit membership-based business organization dedicated to promoting, supporting, and enhancing the vitality of Downtown Missoula for the betterment of our community. Created in 1975, the organization strives to retain and promote Downtown Missoula as Western Montana's center of business, culture and entertainment; provide a forum for mutual solutions to common problems Downtown; encourage preservation and enhancement of the area's physical beauty; and create public awareness of the historic and cultural significance of Missoula's unique Downtown to the community as a whole.



The Downtown Business Improvement District

was created in 2005 to unify the Downtown property owners in the maintenance and management of Downtown's common-area space. In 2020 the

BID Assessment was renewed for another ten years with 75% approval from property owners within the District.

With a focus on clean, safe, and economic vitality, the BID is responsible for garbage and recycling, graffiti removal and snow removal, business development initiatives, research, and more. The Downtown Clean Team and the Downtown Police Officers are all funded by the BID and its 600+ property owners.



The Missoula Downtown Foundation

is a public benefit corporation organized exclusively for charitable and educational purposes of supporting and promoting activities such as the enhancement of the arts and culture, livability, economy, safety and infrastructure of the greater Downtown Missoula area. Created in 2010, the MDF's goal is to fund Downtown Missoula projects and infrastructure.



**COFFEE. ICE CREAM.
MASSAGES.
CLOTHING. PINTS.
DATE NIGHTS.**
One Card. Endless Possibilities.



Accepted at over 200 locations.

Missoula Downtown Gift Cards can be purchased at the Downtown Missoula Partnership (218 E. Main), Paddleheads Post (140 N. Higgins), or at missouladowntown.com.